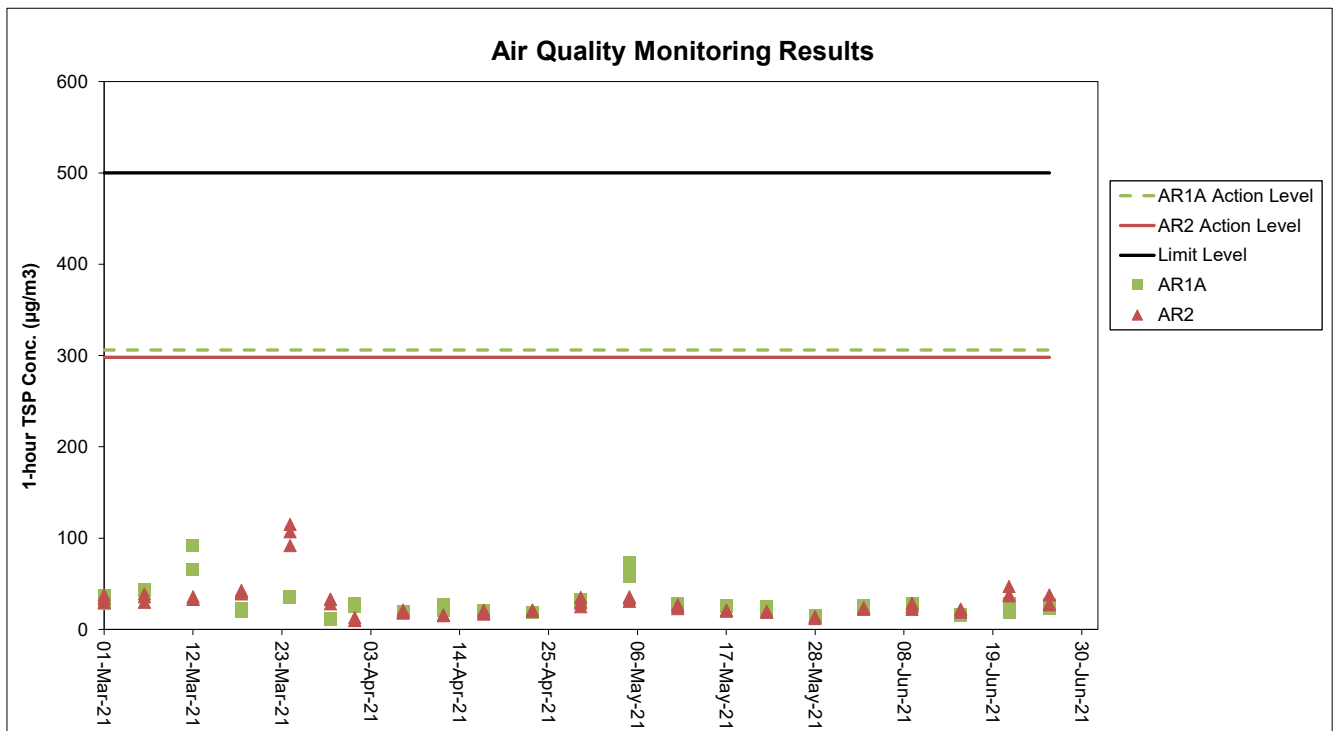


Appendix C. Monitoring Results

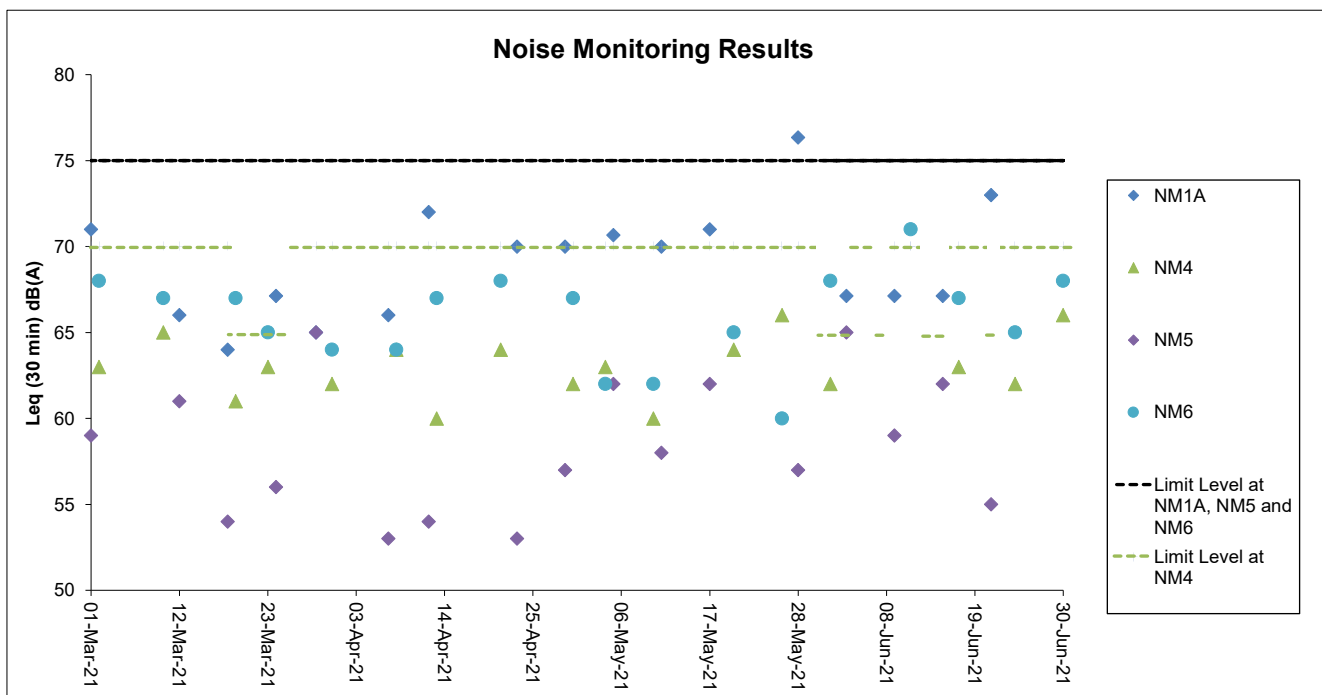
Air Quality Monitoring Results



Notes:

1. The key activities of the Project carried out in the reporting period included reclamation works and land-based works. Works in the reclamation areas included deep cement mixing (DCM) works, marine filling, seawall and facilities construction, together with runway and associated works. Land-based works on existing airport island involved mainly airfield works, foundation and substructure work for Terminal 2 expansion, modification and tunnel work for Automated People Mover (APM) and Baggage Handling System (BHS), and preparation work for utilities, with activities include site establishment, site office construction, road and drainage works, cable ducting, demolition, piling, and excavation works.
2. General weather condition during monitoring ranged from sunny to cloudy. Detailed meteorological conditions can be referred to Table 2.3 of this Report and corresponding Monthly EM&A Reports.
3. QA/ QC requirements as stipulated in the EM&A Manual were carried out during measurement.

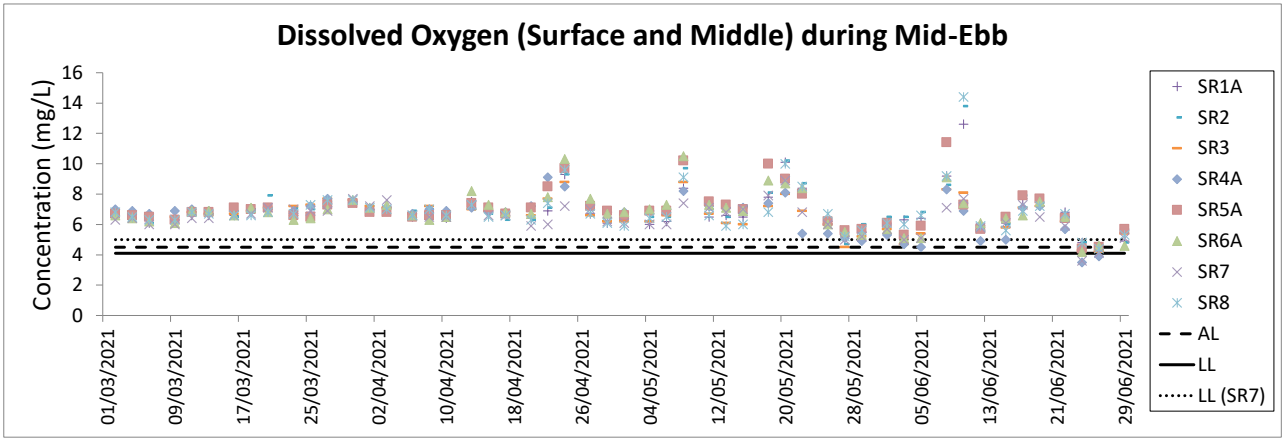
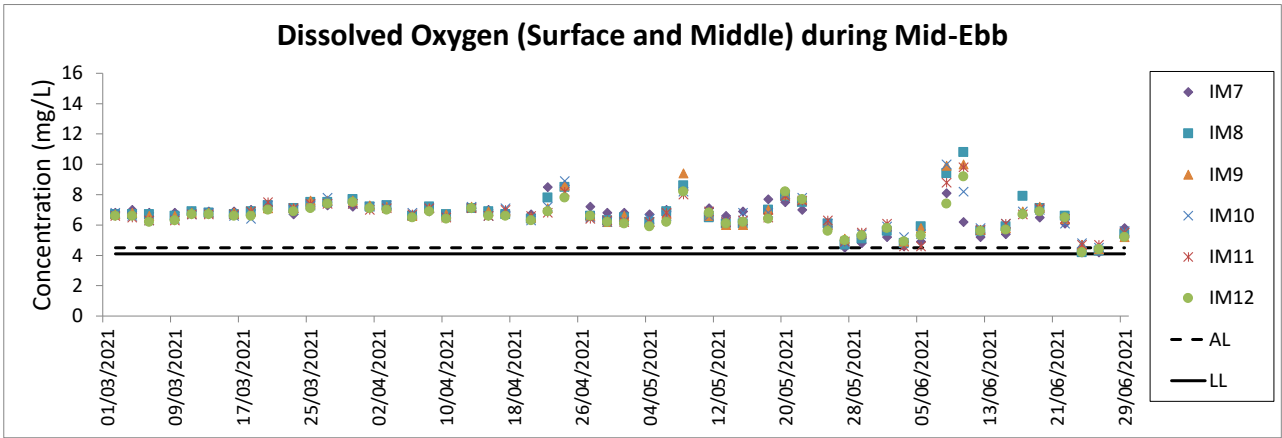
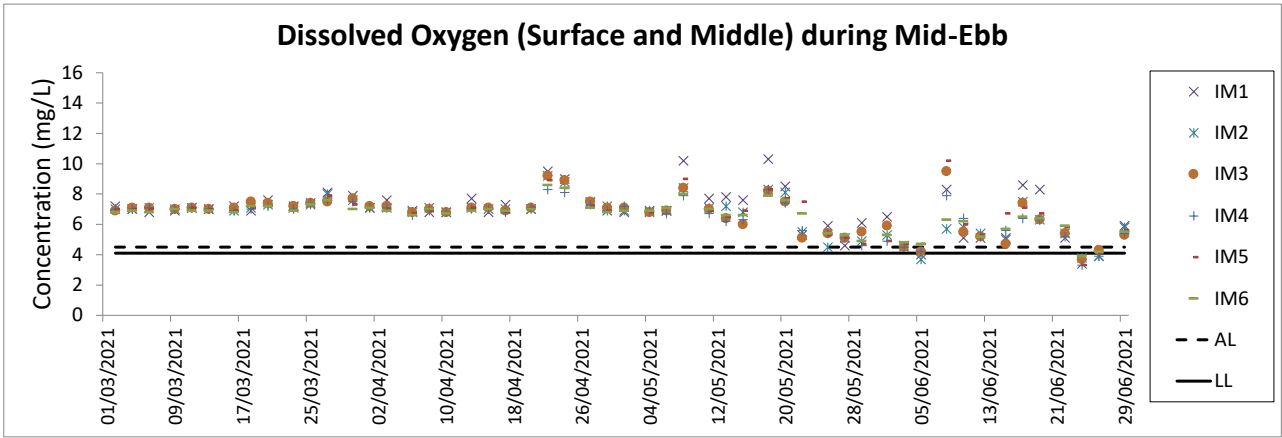
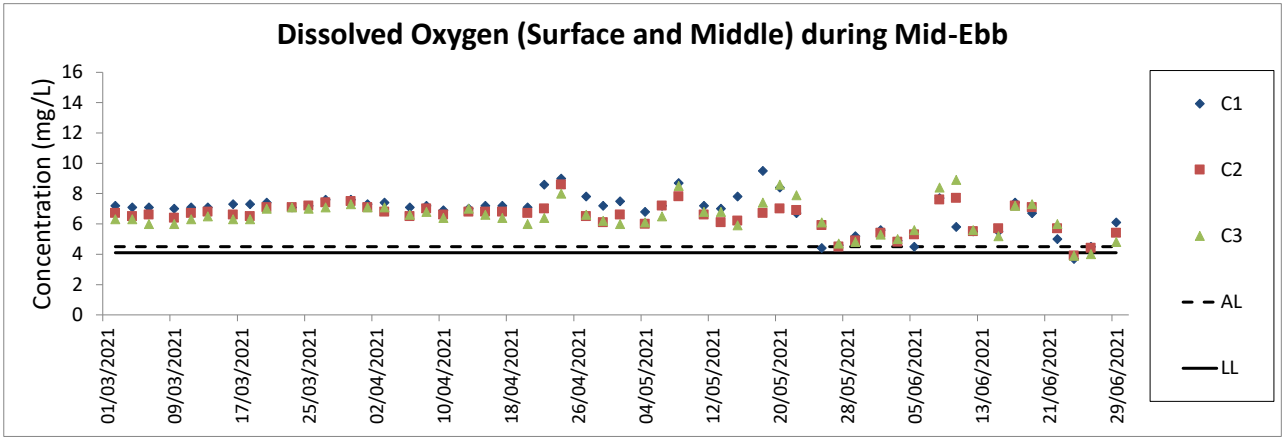
Noise Monitoring Results



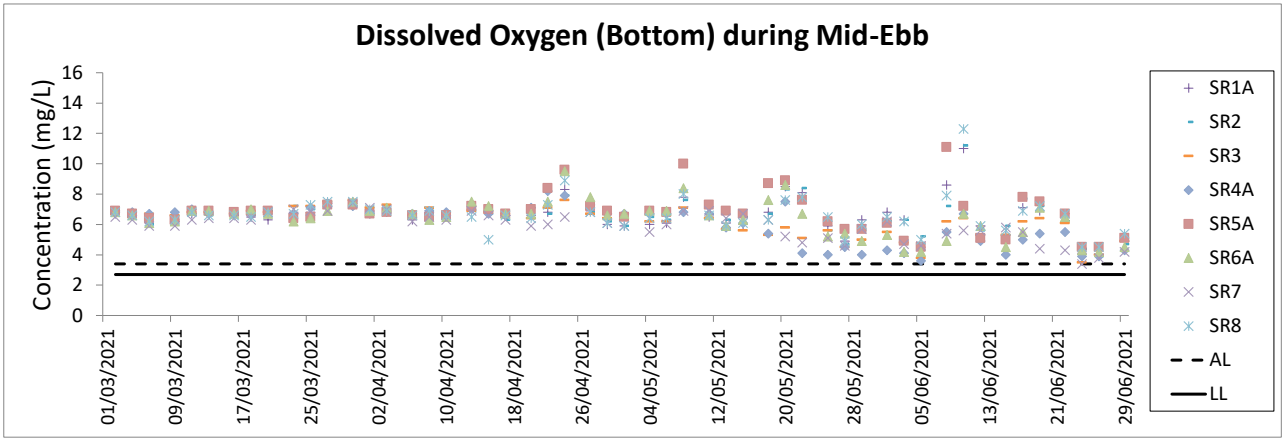
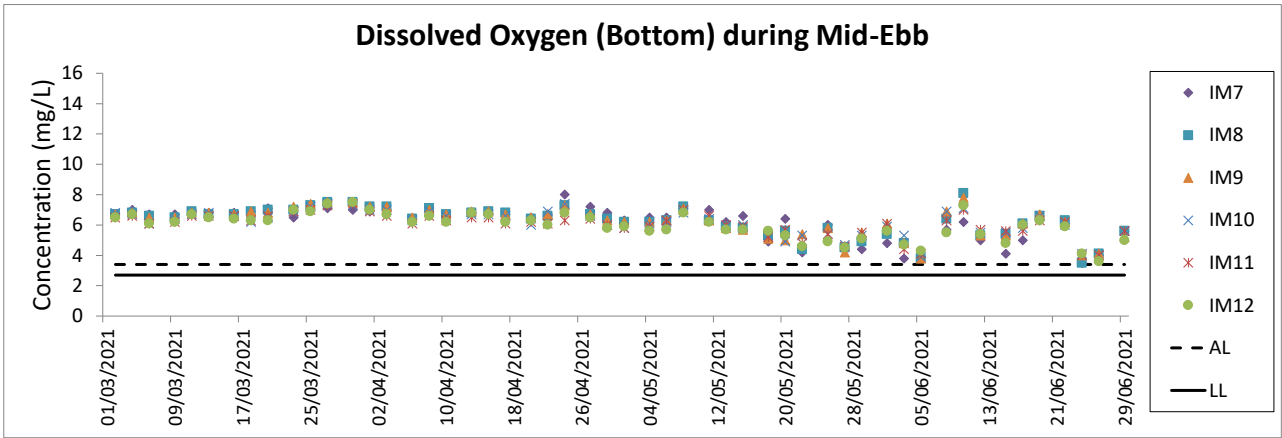
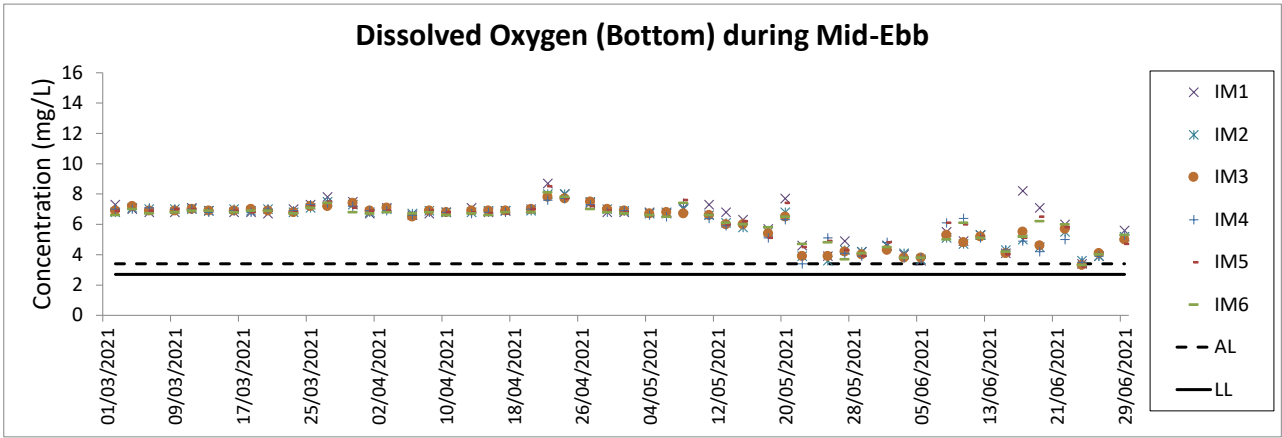
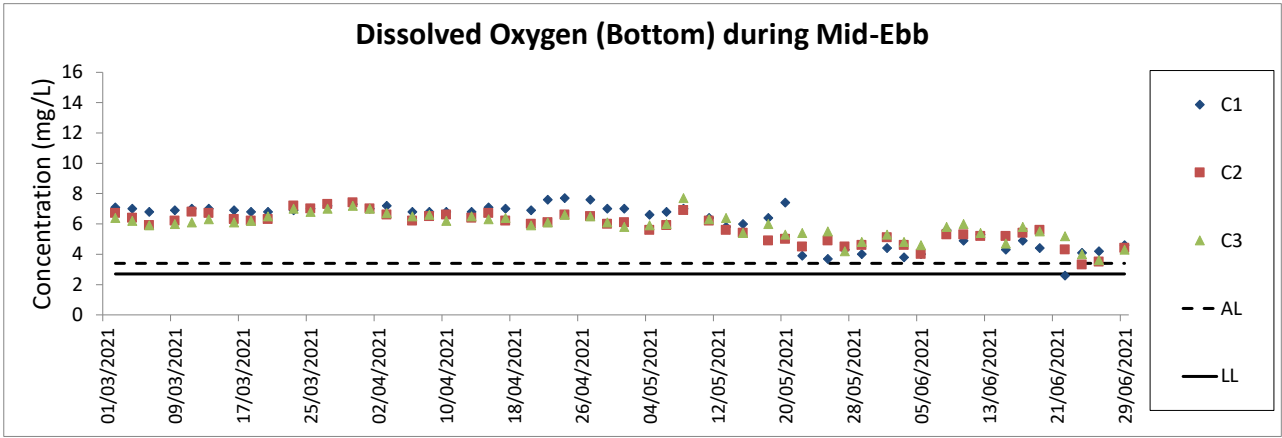
Notes:

1. The Limit Level is reduced to 70dB(A) for school and 65dB(A) during school examination period at NM4. School examination took place from 31 May to 4 June 2021, and Basic Competency Assessment took place on 7, 8, 11, 15, 16, and 21 June during this reporting period.
2. The key activities of the Project carried out in the reporting period included reclamation works and land-based works. Works in the reclamation areas included deep cement mixing (DCM) works, marine filling, seawall and facilities construction, together with runway and associated works. Land-based works on existing airport island involved mainly airfield works, foundation and substructure work for Terminal 2 expansion, modification and tunnel work for Automated People Mover (APM) and Baggage Handling System (BHS), and preparation work for utilities, with activities include site establishment, site office construction, road and drainage works, cable ducting, demolition, piling, and excavation works.
3. General weather condition during monitoring ranged from sunny to cloudy. Detailed meteorological conditions can be referred to Table 2.6 of this Report and corresponding Monthly EM&A Reports.
4. QA/ QC requirements as stipulated in the EM&A Manual were carried out during measurement.

Water Quality Monitoring Results

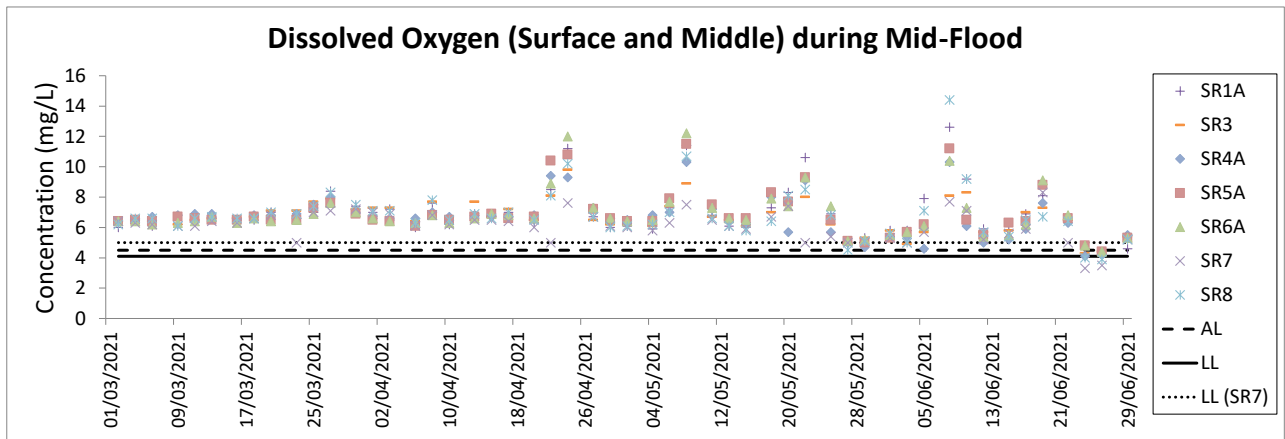
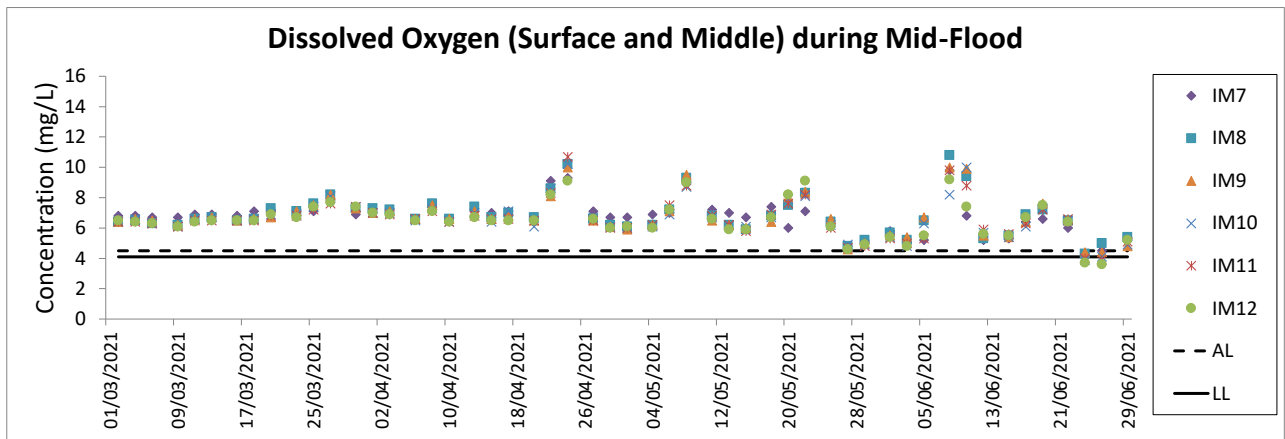
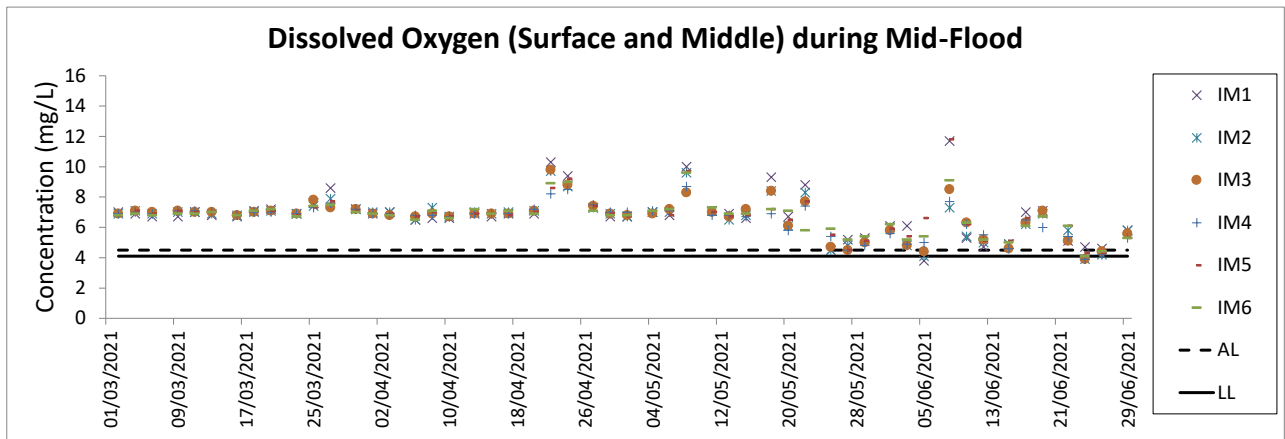
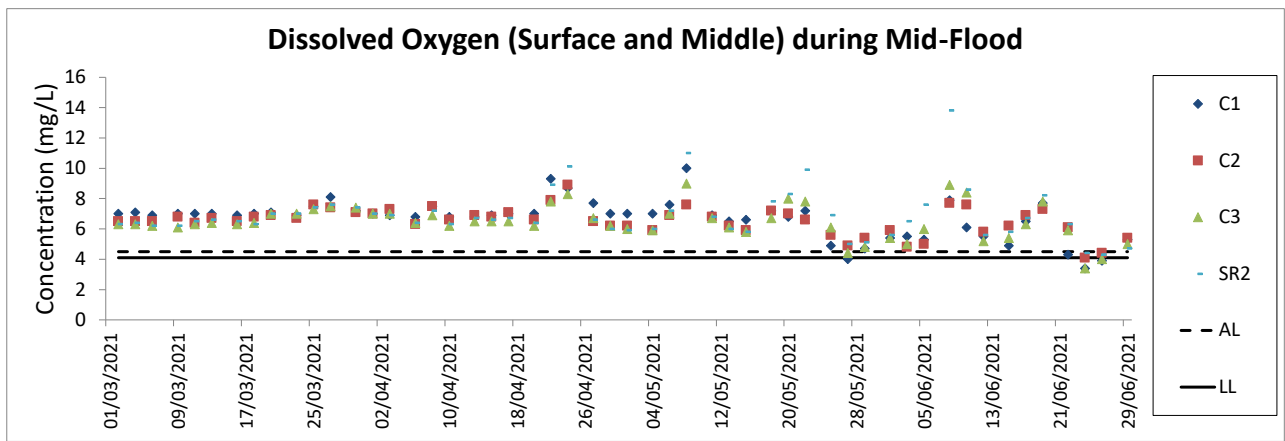


- Notes:
1. The key marine works activities of the Project during monitoring included deep cement mixing (DCM) works, marine filling, seawall and facilities construction, together with runway and associated works.
 2. General weather condition during monitoring ranged from sunny to rainy, with sea condition ranged from calm to rough. Detailed meteorological conditions can be referred to Table 2.11 of this Report and corresponding Monthly EM&A Reports.
 3. QA/ QC requirements as stipulated in the EM&A Manual were carried out during measurement.



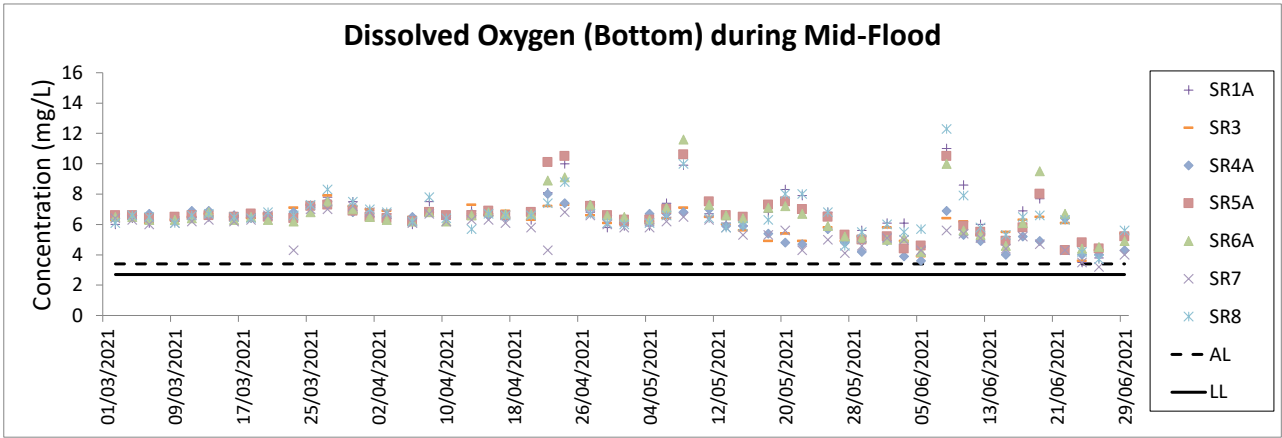
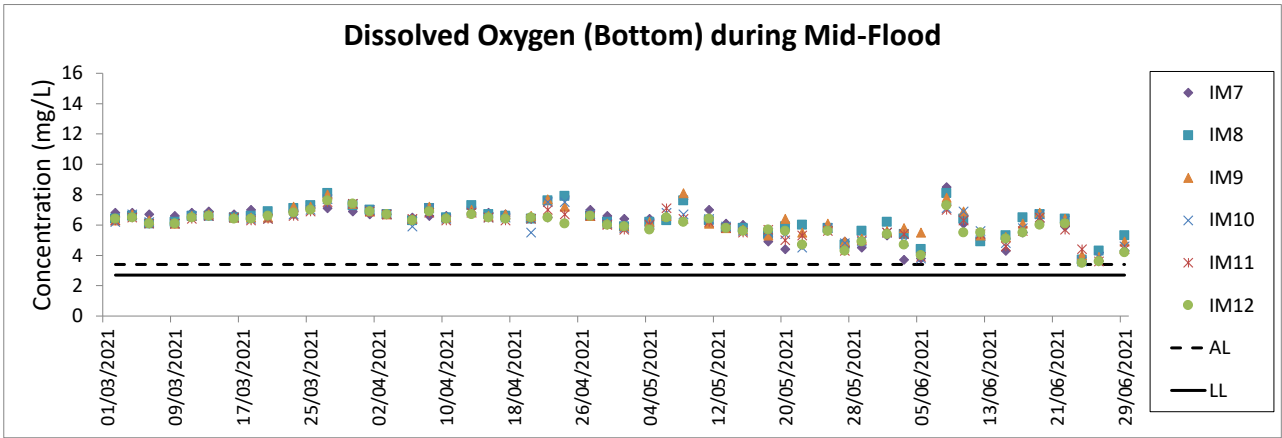
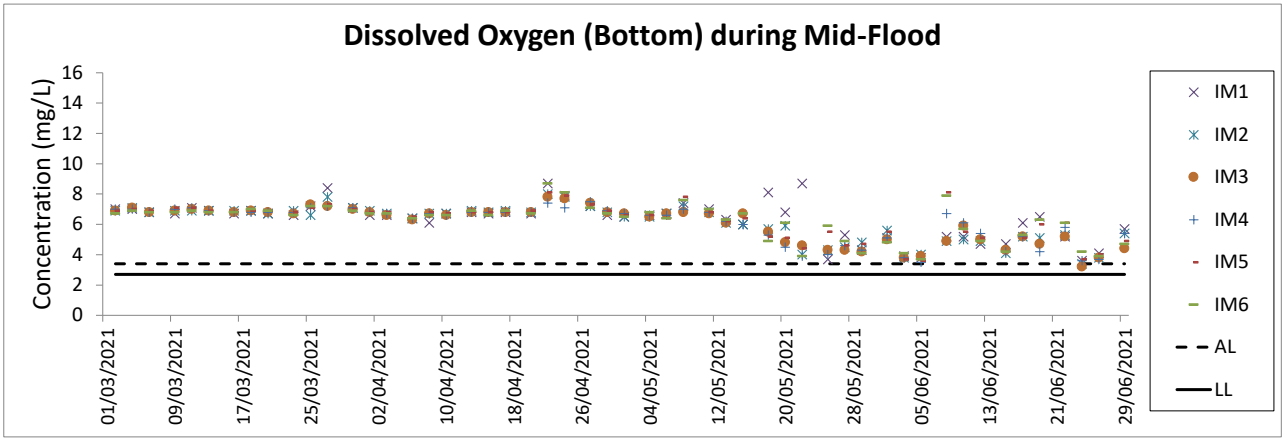
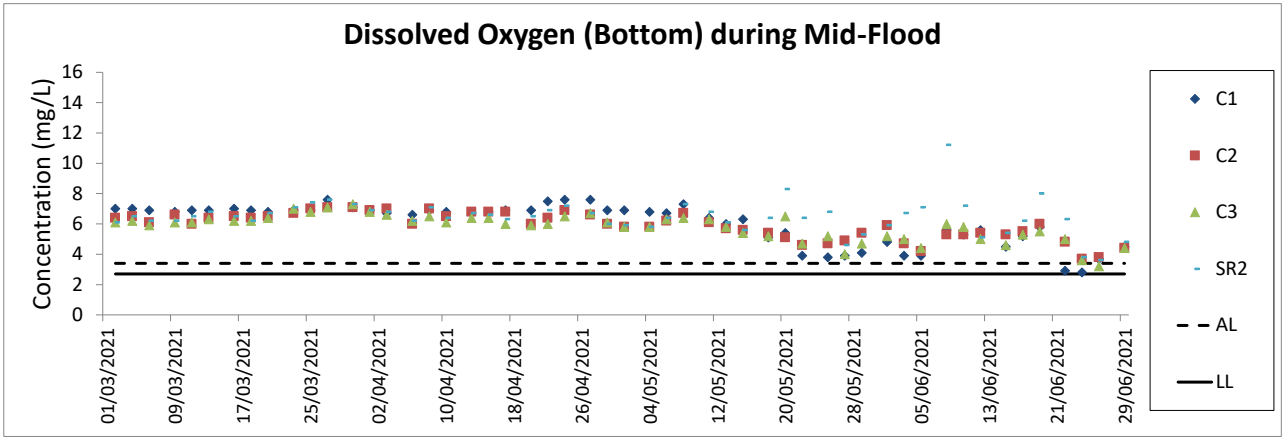
Notes:

1. The key marine works activities of the Project during monitoring included deep cement mixing (DCM) works, marine filling, seawall and facilities construction, together with runway and associated works.
2. General weather condition during monitoring ranged from sunny to rainy, with sea condition ranged from calm to rough. Detailed meteorological conditions can be referred to Table 2.11 of this Report and corresponding Monthly EM&A Reports.
3. QA/QC requirements as stipulated in the EM&A Manual were carried out during measurement.



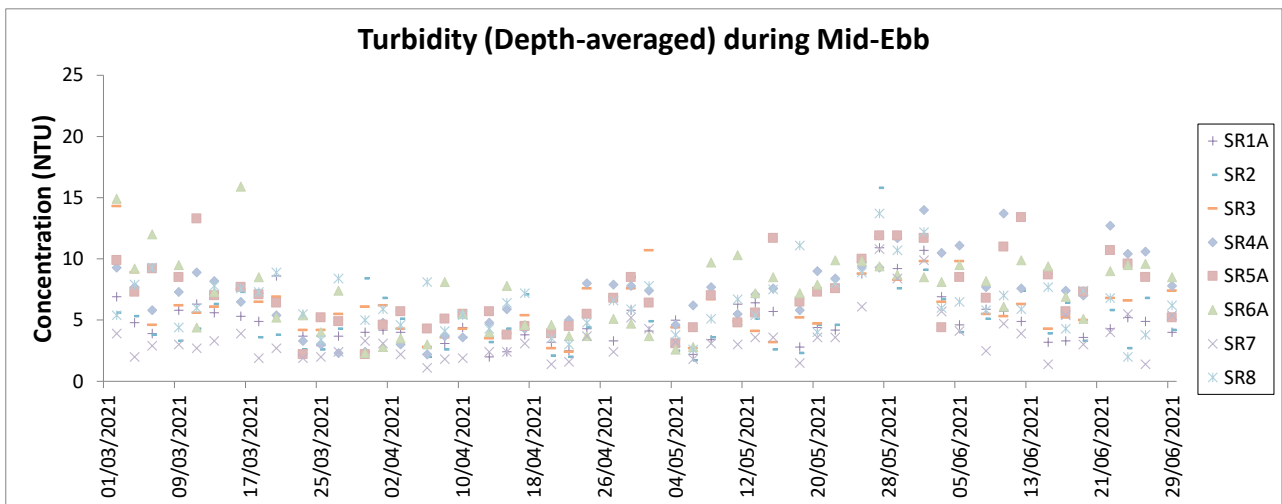
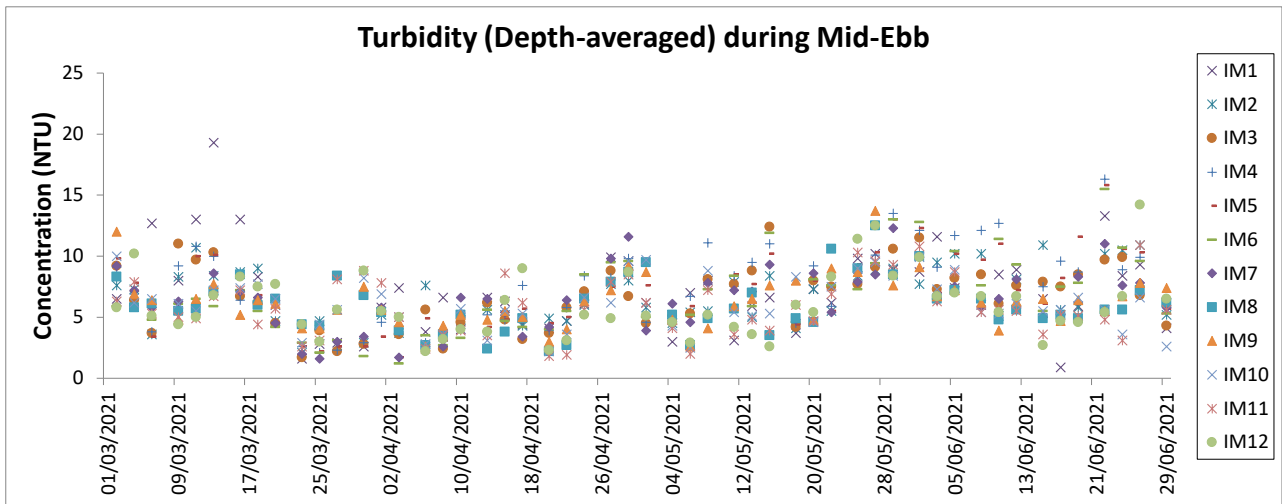
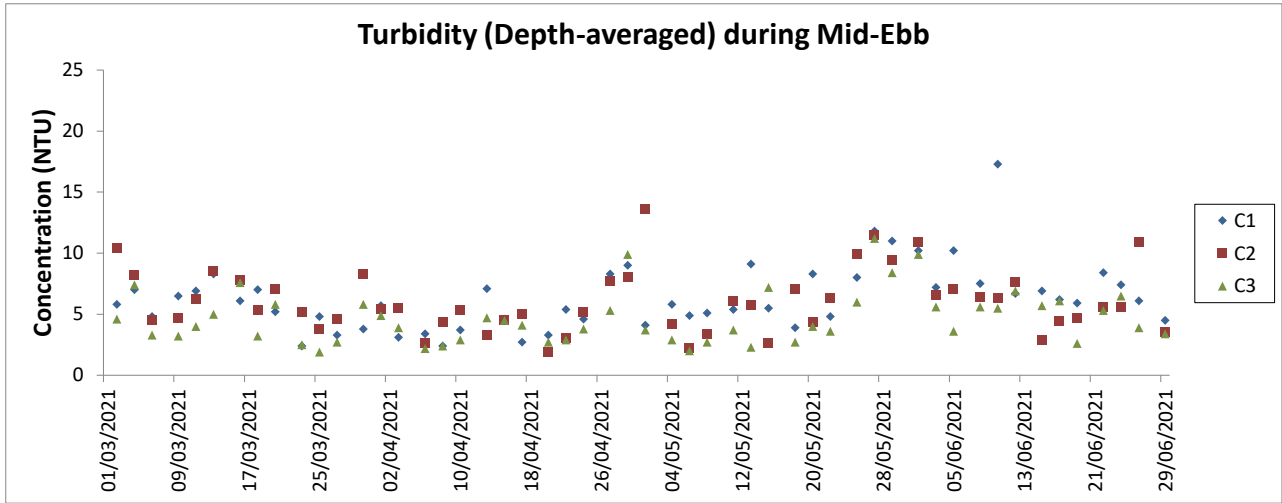
Notes:

1. The key marine works activities of the Project during monitoring included deep cement mixing (DCM) works, marine filling, seawall and facilities construction, together with runway and associated works.
2. General weather condition during monitoring ranged from sunny to rainy, with sea condition ranged from calm to rough. Detailed meteorological conditions can be referred to Table 2.11 of this Report and corresponding Monthly EM&A Reports.
3. QA/ QC requirements as stipulated in the EM&A Manual were carried out during measurement.

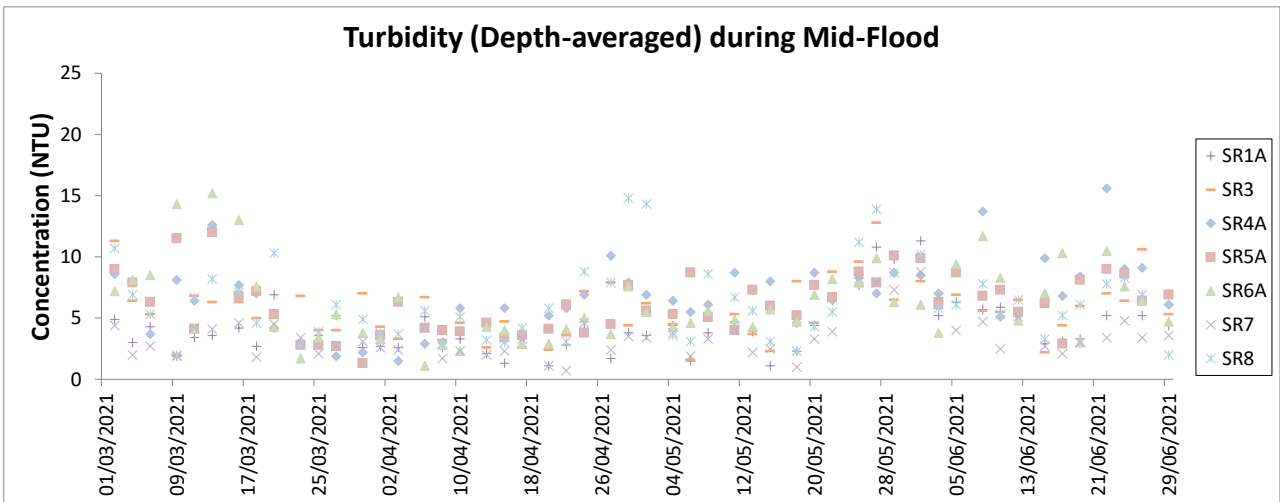
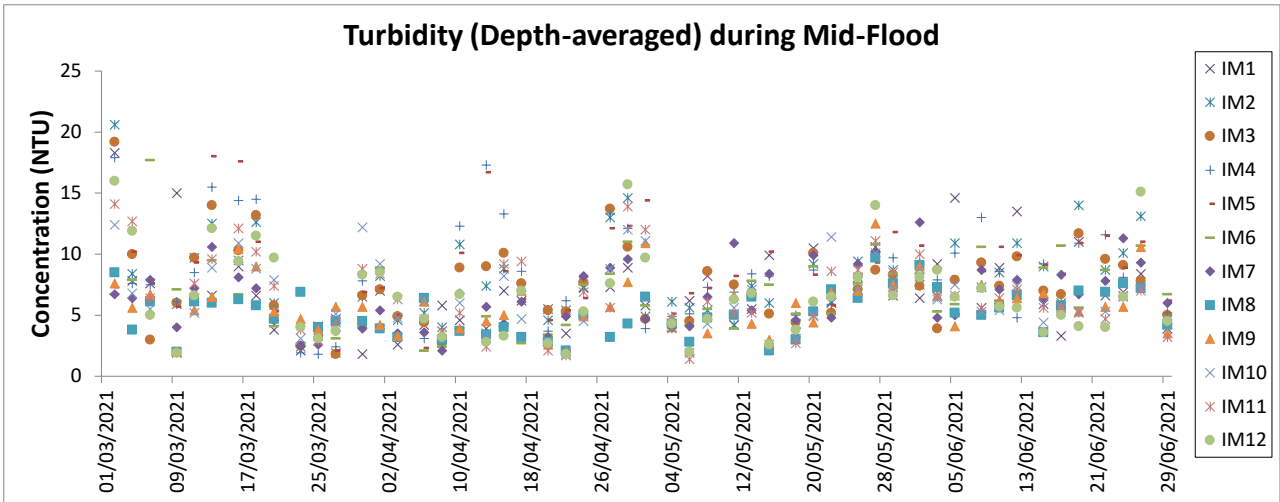
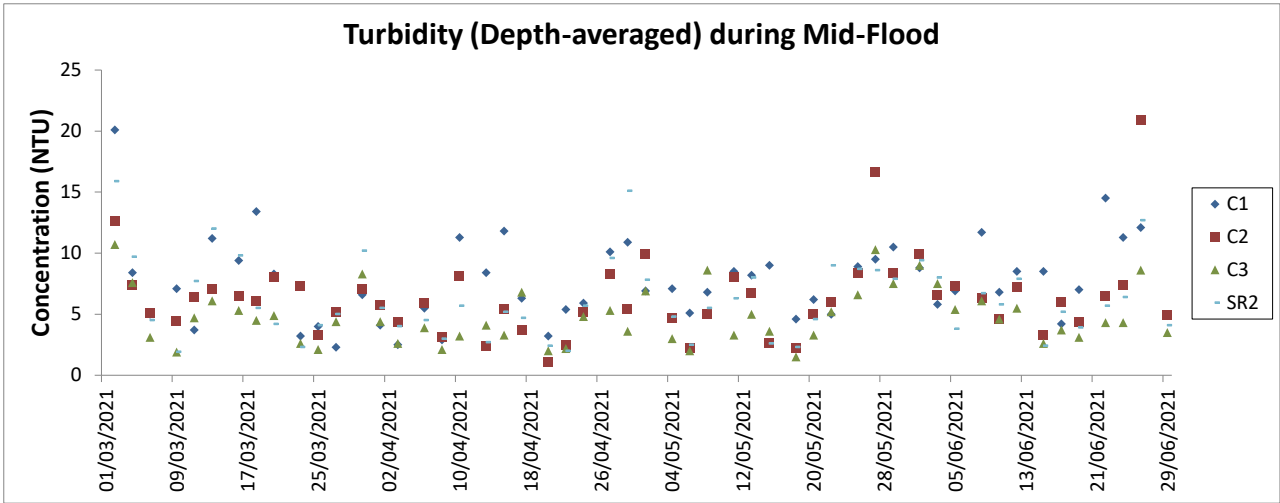


Notes:

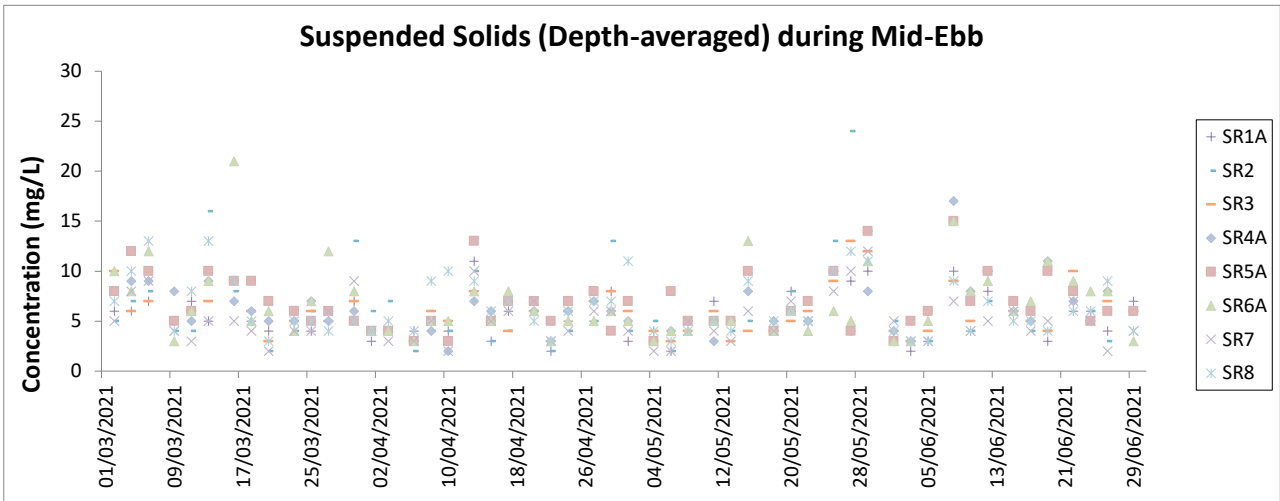
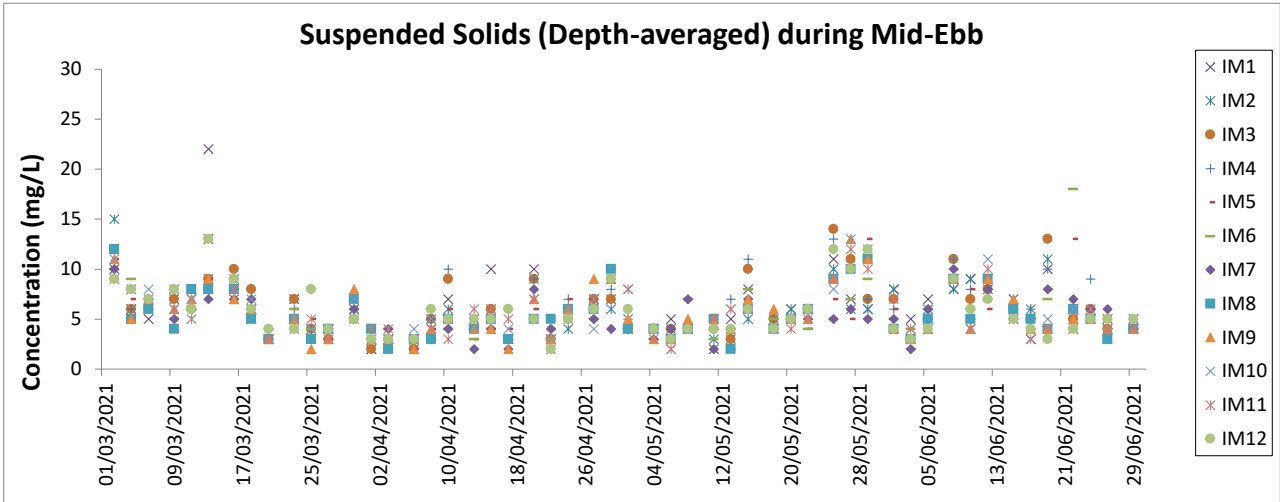
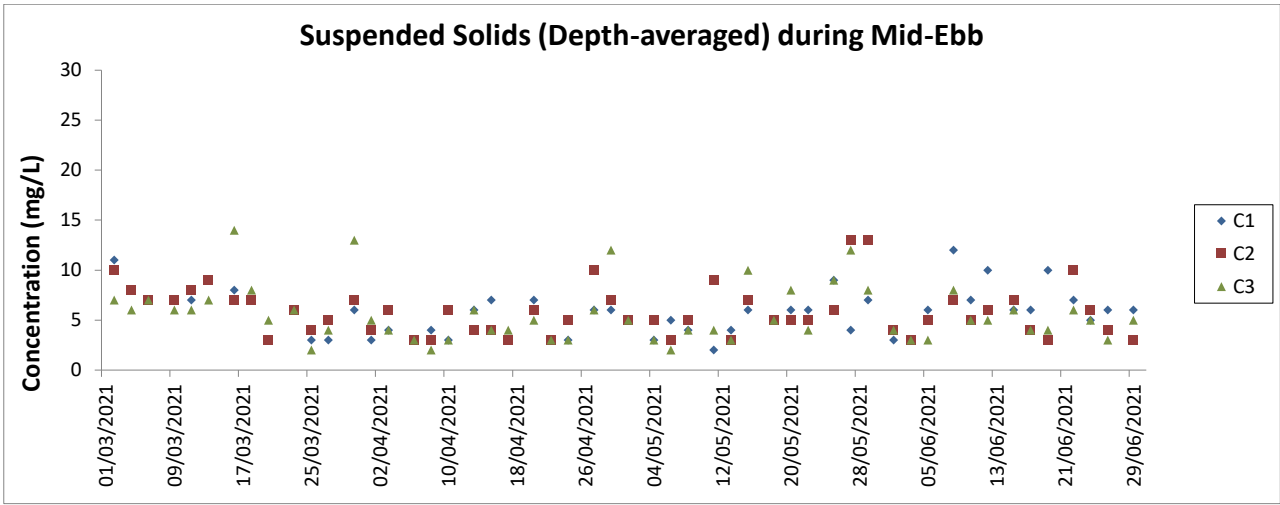
1. The key marine works activities of the Project during monitoring included deep cement mixing (DCM) works, marine filling, seawall and facilities construction, together with runway and associated works.
2. General weather condition during monitoring ranged from sunny to rainy, with sea condition ranged from calm to rough. Detailed meteorological conditions can be referred to Table 2.11 of this Report and corresponding Monthly EM&A Reports.
3. QA/ QC requirements as stipulated in the EM&A Manual were carried out during measurement.



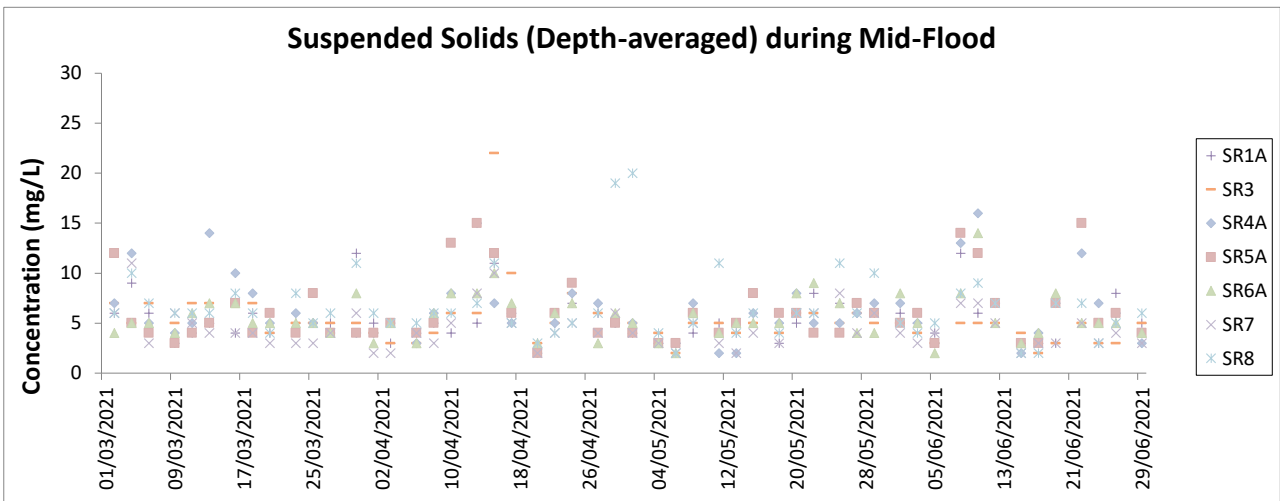
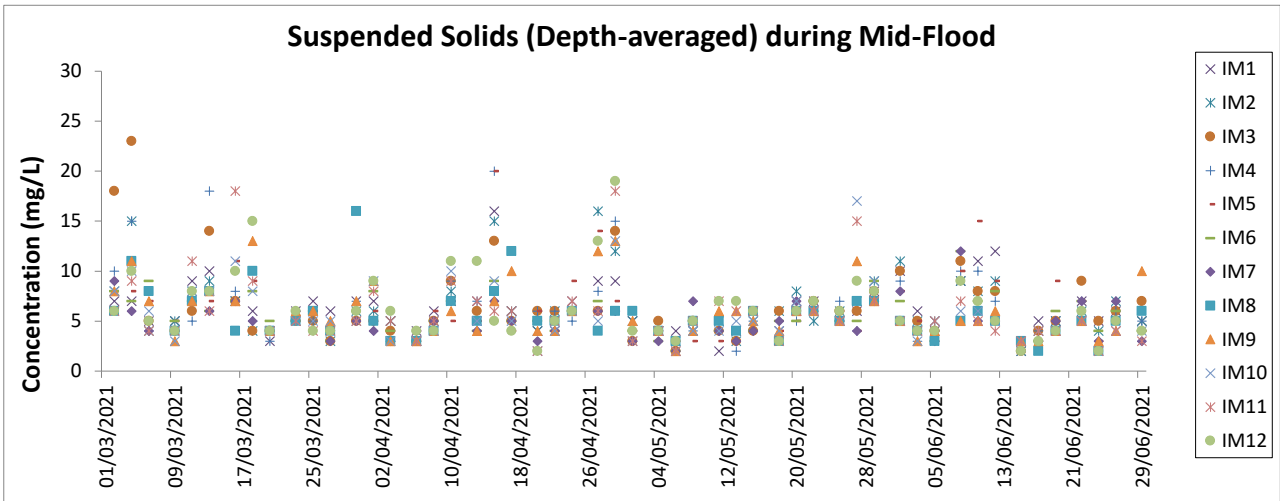
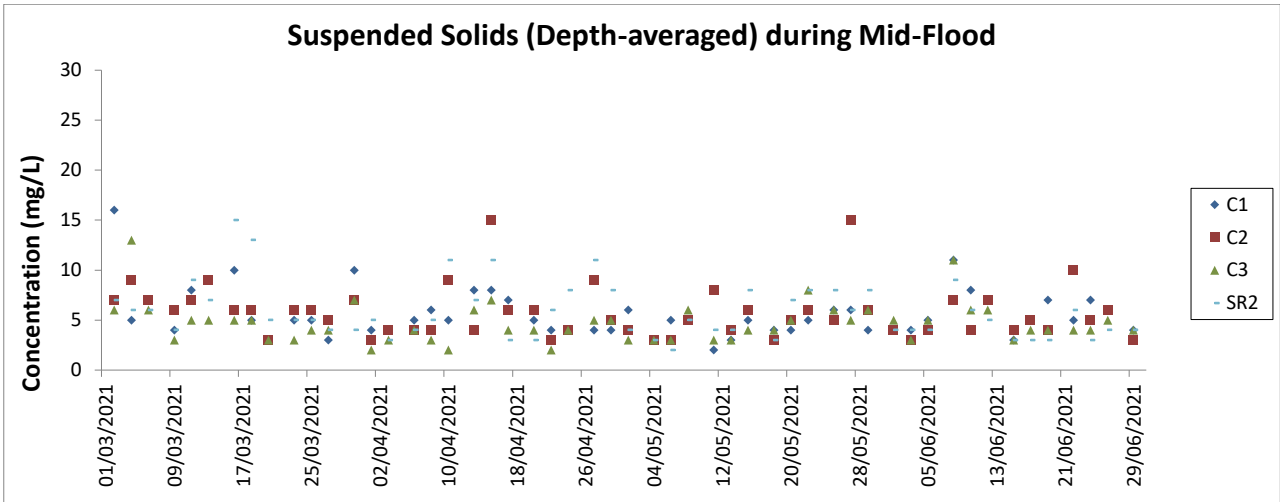
- Notes:
1. The Action and Limit Levels can be referred to Table 2.8 of this Report.
 2. The key marine works activities of the Project during monitoring included deep cement mixing (DCM) works, marine filling, seawall and facilities construction, together with runway and associated works.
 3. General weather condition during monitoring ranged from sunny to rainy, with sea condition ranged from calm to rough. Detailed meteorological conditions can be referred to Table 2.11 of this Report and corresponding Monthly EM&A Reports.
 4. QA/ QC requirements as stipulated in the EM&A Manual were carried out during measurement.



- Notes:
1. The Action and Limit Levels can be referred to Table 2.8 of this Report.
 2. The key marine works activities of the Project during monitoring included deep cement mixing (DCM) works, marine filling, seawall and facilities construction, together with runway and associated works.
 3. General weather condition during monitoring ranged from sunny to rainy, with sea condition ranged from calm to rough. Detailed meteorological conditions can be referred to Table 2.11 of this Report and corresponding Monthly EM&A Reports.
 4. QA/ QC requirements as stipulated in the EM&A Manual were carried out during measurement.

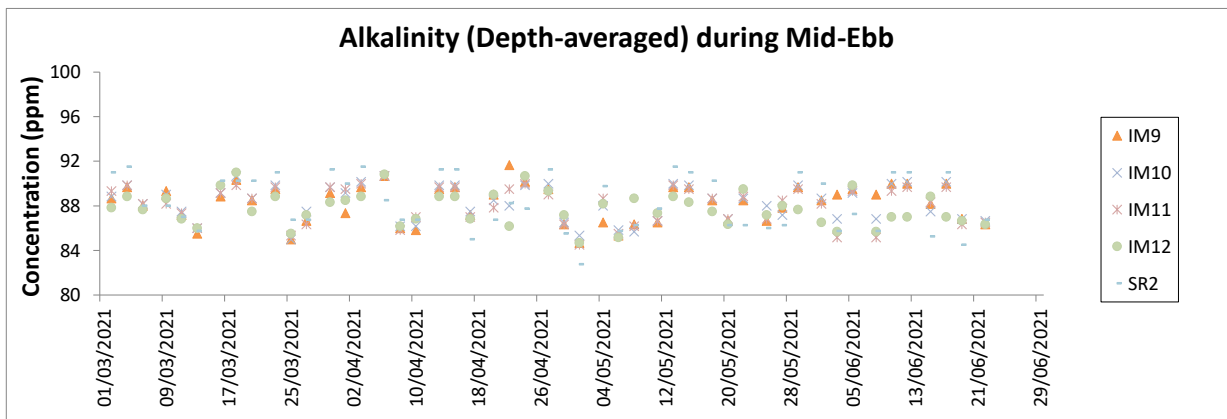
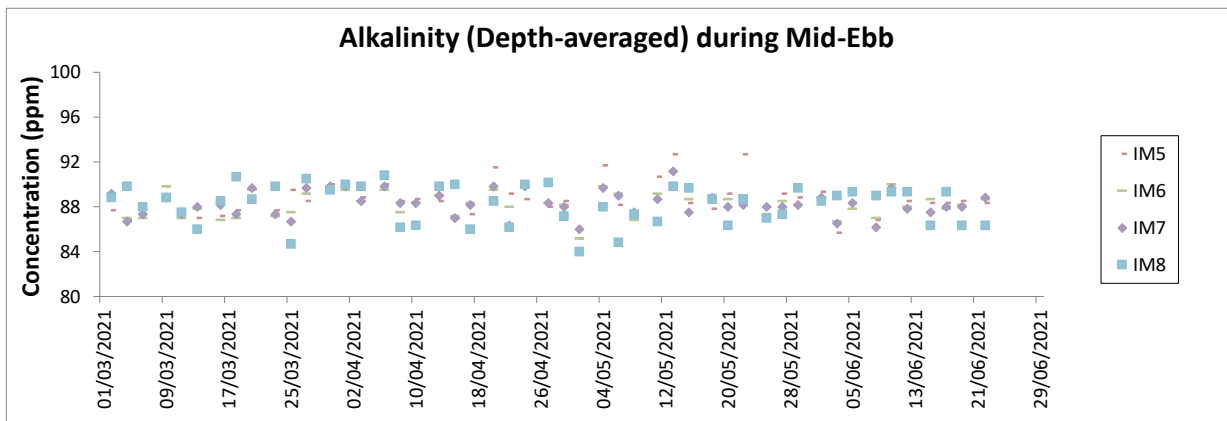
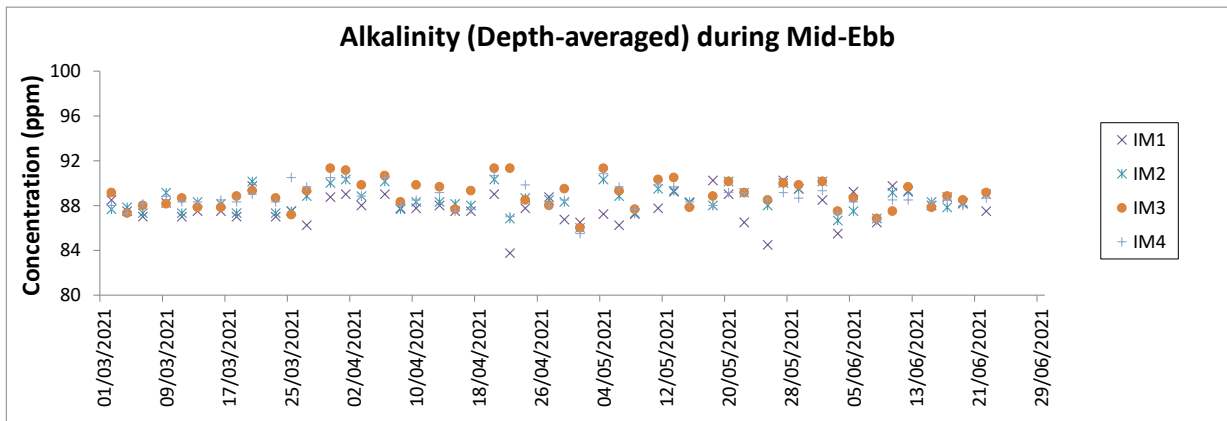
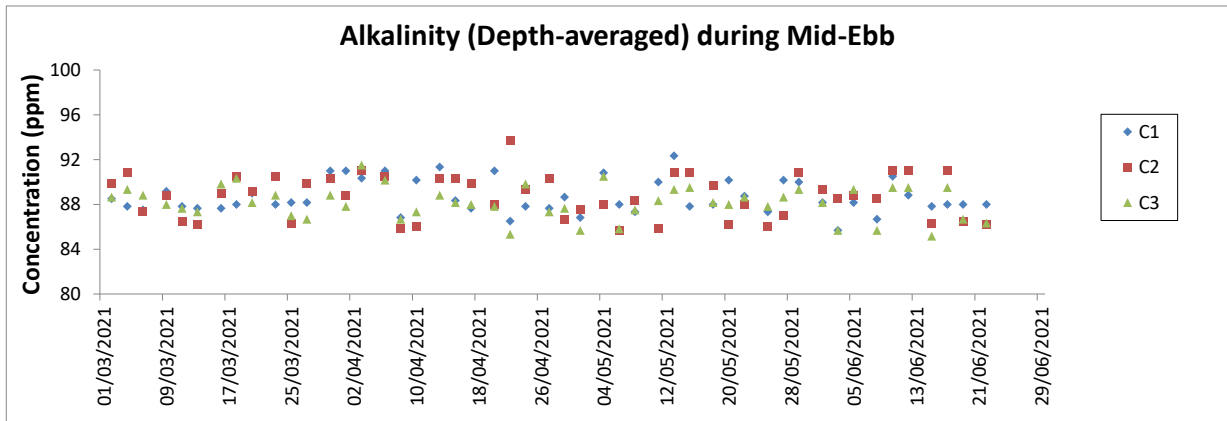


- Notes:
1. The Action and Limit Levels can be referred to Table 2.8 of this Report.
 2. The key marine works activities of the Project during monitoring included deep cement mixing (DCM) works, marine filling, seawall and facilities construction, together with runway and associated works.
 3. General weather condition during monitoring ranged from sunny to rainy, with sea condition ranged from calm to rough. Detailed meteorological conditions can be referred to Table 2.11 of this Report and corresponding Monthly EM&A Reports.
 4. QA/ QC requirements as stipulated in the EM&A Manual were carried out during measurement.



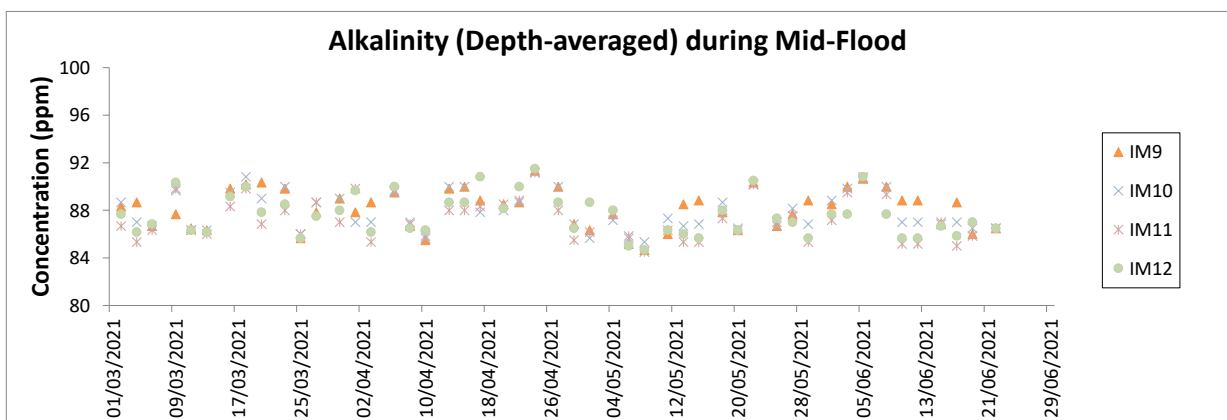
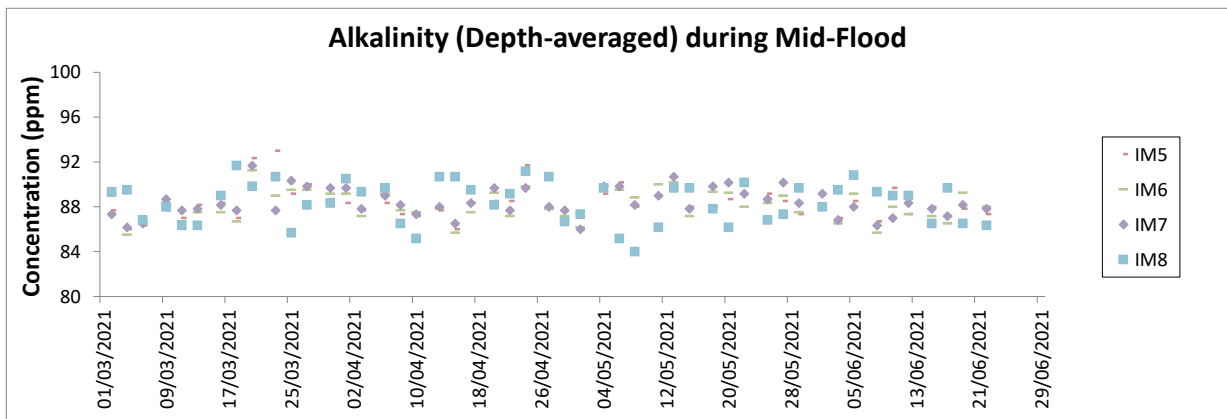
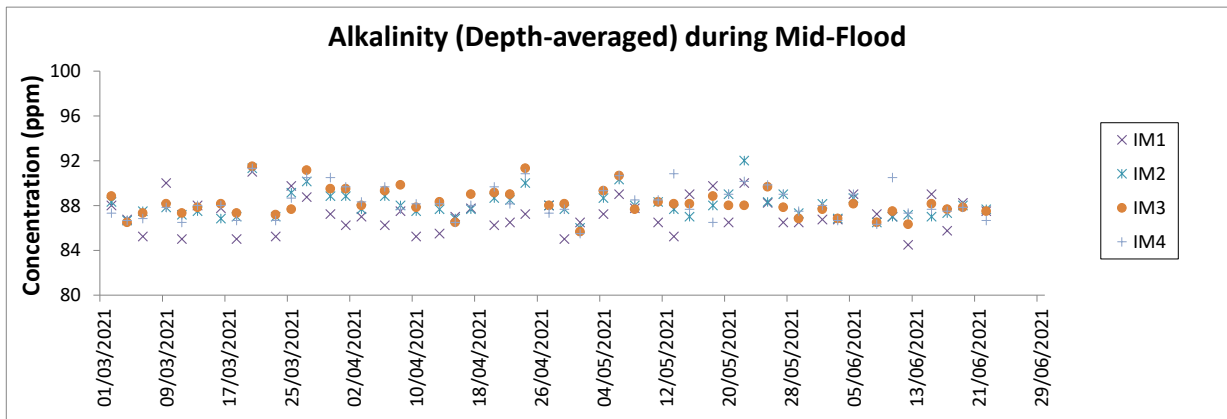
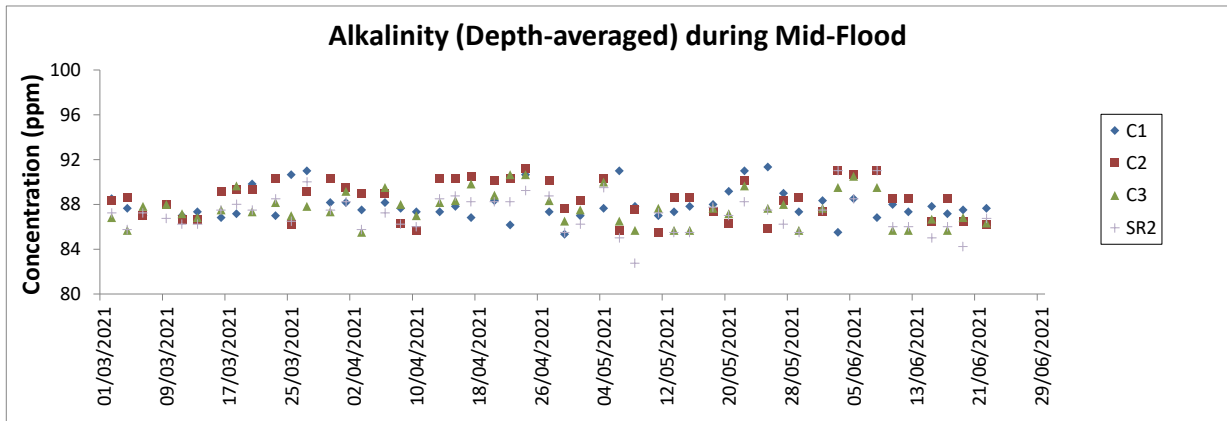
Notes:

1. The Action and Limit Levels can be referred to Table 2.8 of this Report.
2. The key marine works activities of the Project during monitoring included deep cement mixing (DCM) works, marine filling, seawall and facilities construction, together with runway and associated works.
3. General weather condition during monitoring ranged from sunny to rainy, with sea condition ranged from calm to rough. Detailed meteorological conditions can be referred to Table 2.11 of this Report and corresponding Monthly EM&A Reports.
4. QA/ QC requirements as stipulated in the EM&A Manual were carried out during measurement.



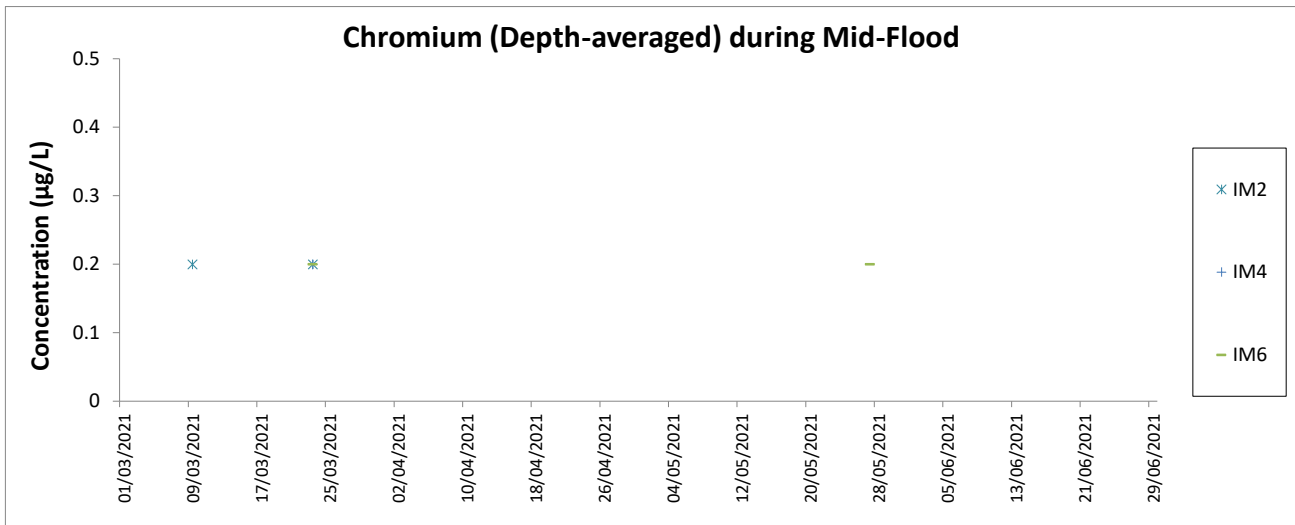
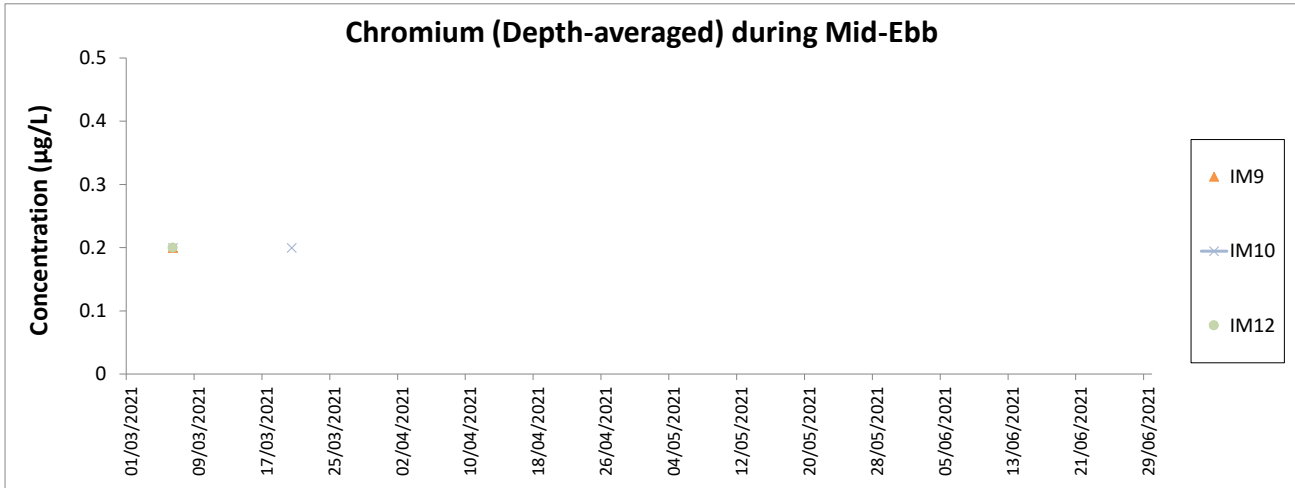
Notes:

1. The Action and Limit Levels can be referred to Table 2.8 of this Report.
2. The key marine works activities of the Project during monitoring included deep cement mixing (DCM) works, marine filling, seawall and facilities construction, together with runway and associated works.
3. General weather condition during monitoring ranged from sunny to rainy, with sea condition ranged from calm to rough. Detailed meteorological conditions can be referred to Table 2.11 of this Report and corresponding Monthly EM&A Reports.
4. QA/ QC requirements as stipulated in the EM&A Manual were carried out during measurement.
5. Due to the completion of all marine-based DCM works within May 2021, regular DCM monitoring is ceased at all monitoring stations starting from 24 June 2021 and would be resumed if there are marine-based DCM works in the coming future.



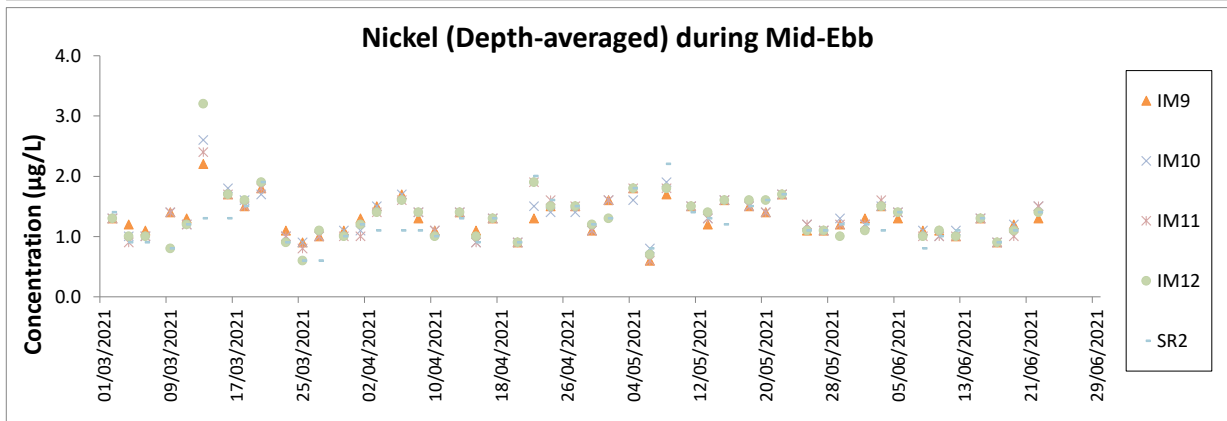
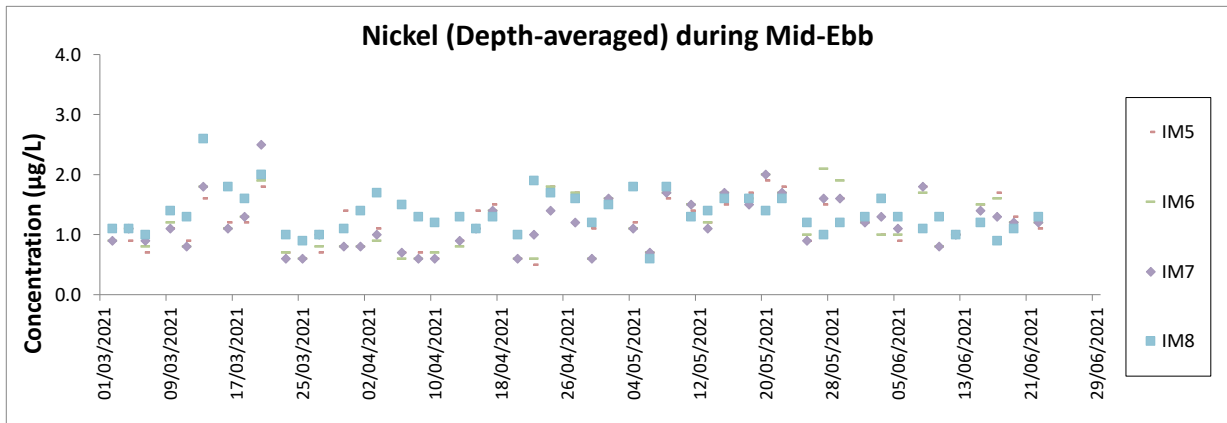
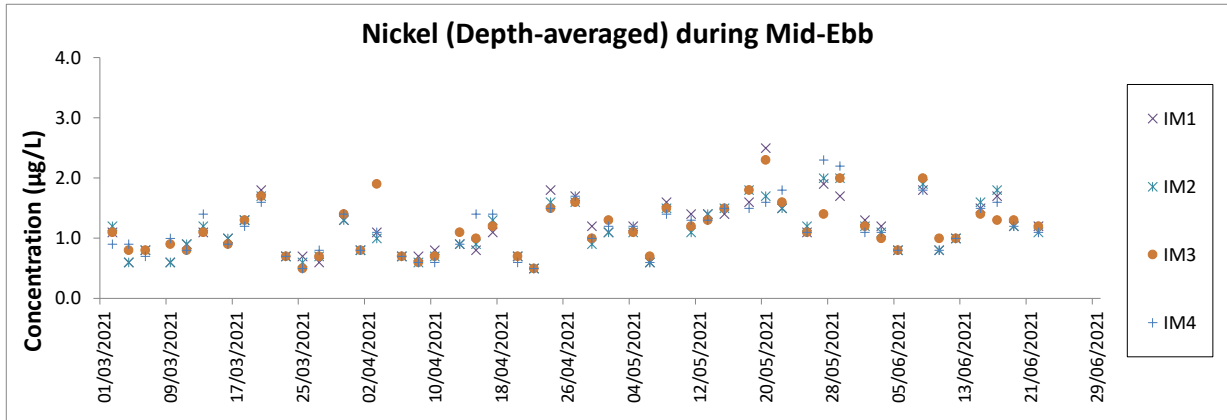
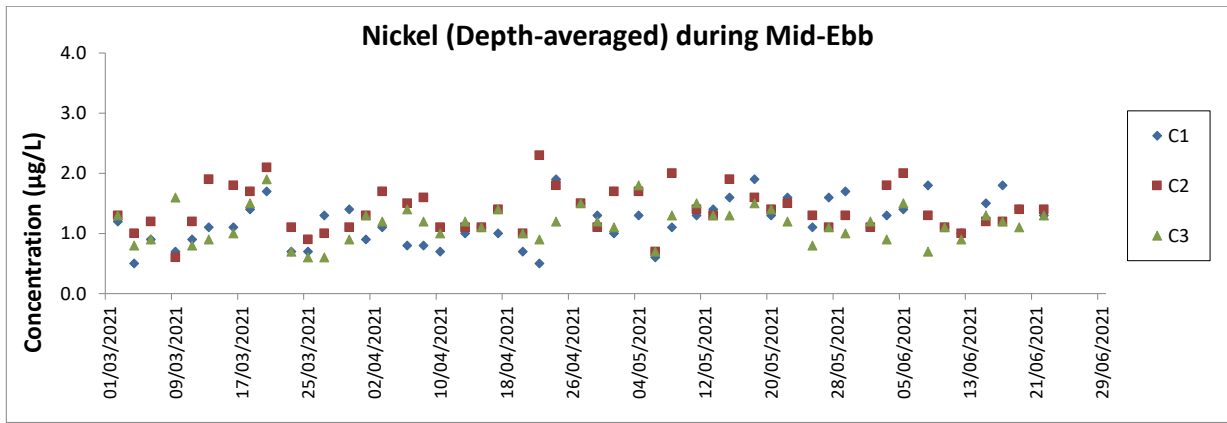
Notes:

1. The Action and Limit Levels can be referred to Table 2.8 of this Report.
2. The key marine works activities of the Project during monitoring included deep cement mixing (DCM) works, marine filling, seawall and facilities construction, together with runway and associated works.
3. General weather condition during monitoring ranged from sunny to rainy, with sea condition ranged from calm to rough. Detailed meteorological conditions can be referred to Table 2.11 of this Report and corresponding Monthly EM&A Reports.
4. QA/ QC requirements as stipulated in the EM&A Manual were carried out during measurement.
5. Due to the completion of all marine-based DCM works within May 2021, regular DCM monitoring is ceased at all monitoring stations starting from 24 June 2021 and would be resumed if there are marine-based DCM works in the coming future.



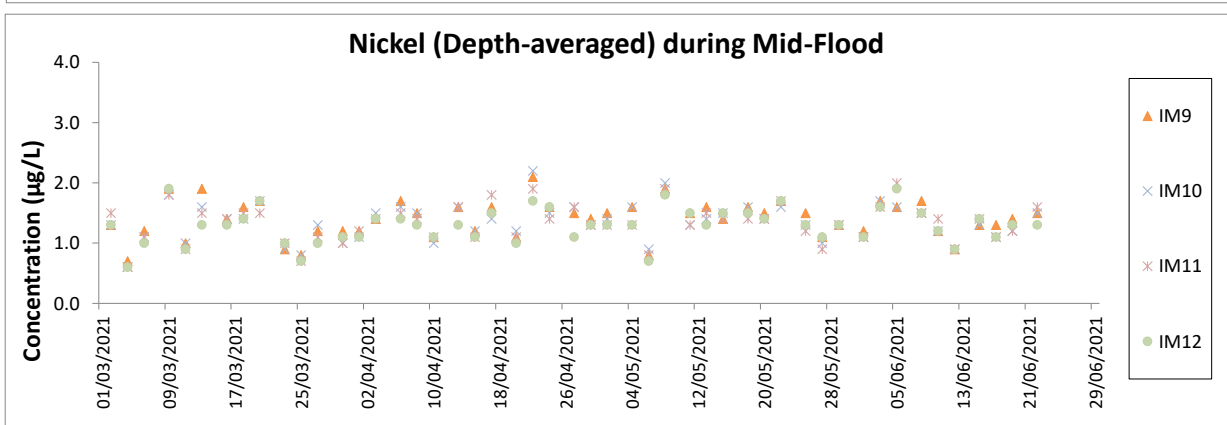
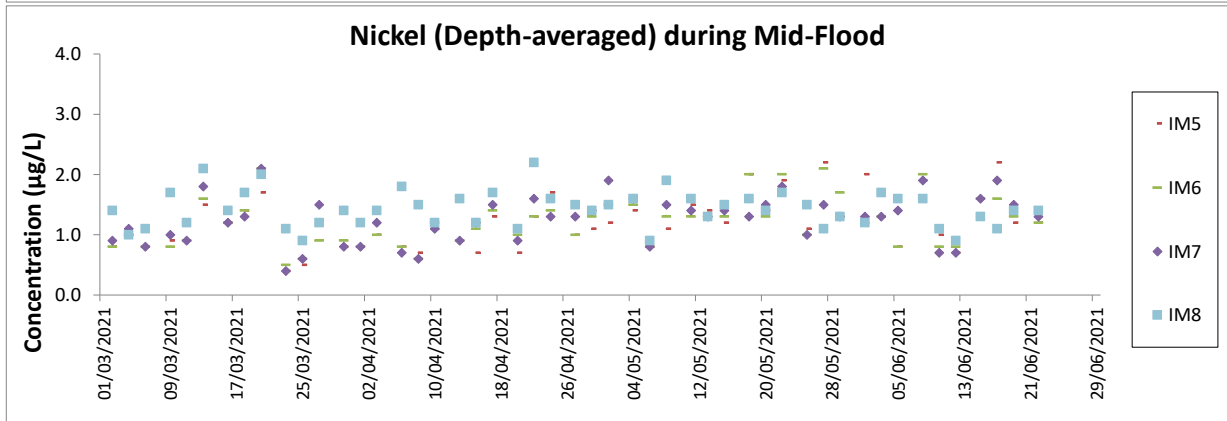
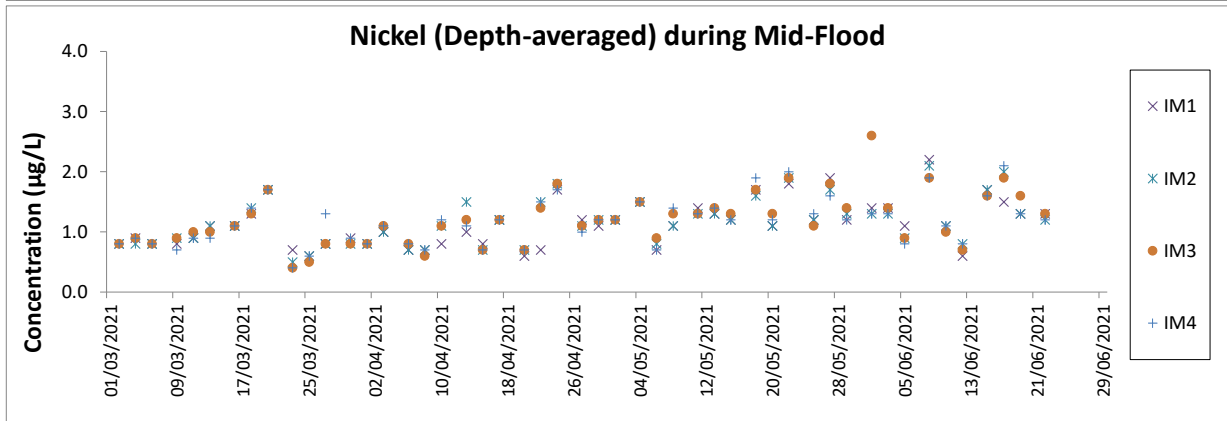
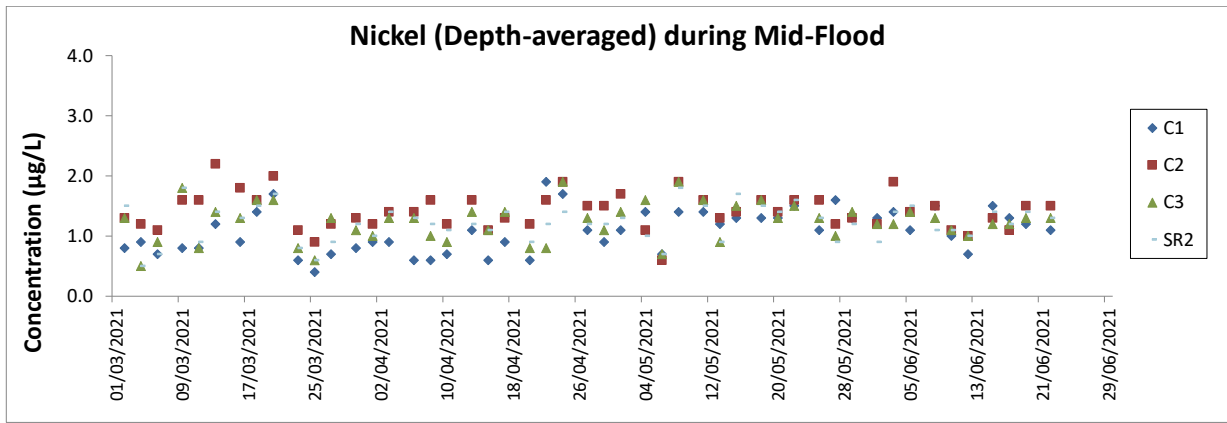
Notes:

1. The Action and Limit Levels can be referred to Table 2.8 of this Report.
2. The monitoring results of chromium not presented above were below the reporting limit of 0.2 µg/L.
3. The key marine works activities of the Project during monitoring included deep cement mixing (DCM) works, marine filling, seawall and facilities construction, together with runway and associated works.
4. General weather condition during monitoring ranged from sunny to rainy, with sea condition ranged from calm to rough. Detailed meteorological conditions can be referred to Table 2.11 of this Report and corresponding Monthly EM&A Reports.
5. QA/ QC requirements as stipulated in the EM&A Manual were carried out during measurement.
6. Due to the completion of all marine-based DCM works within May 2021, regular DCM monitoring is ceased at all monitoring stations starting from 24 June 2021 and would be resumed if there are marine-based DCM works in the coming future.



Notes:

1. The Action and Limit Levels can be referred to Table 2.8 of this Report.
2. The key marine works activities of the Project during monitoring included deep cement mixing (DCM) works, marine filling, seawall and facilities construction, together with runway and associated works.
3. General weather condition during monitoring ranged from sunny to rainy, with sea condition ranged from calm to rough. Detailed meteorological conditions can be referred to Table 2.11 of this Report and corresponding Monthly EM&A Reports.
4. QA/ QC requirements as stipulated in the EM&A Manual were carried out during measurement.
5. Due to the completion of all marine-based DCM works within May 2021, regular DCM monitoring is ceased at all monitoring stations starting from 24 June 2021 and would be resumed if there are marine-based DCM works in the coming future.



Notes:

1. The Action and Limit Levels can be referred to Table 2.8 of this Report.
2. The key marine works activities of the Project during monitoring included deep cement mixing (DCM) works, marine filling, seawall and facilities construction, together with runway and associated works.
3. General weather condition during monitoring ranged from sunny to rainy, with sea condition ranged from calm to rough. Detailed meteorological conditions can be referred to Table 2.11 of this Report and corresponding Monthly EM&A Reports.
4. QA/ QC requirements as stipulated in the EM&A Manual were carried out during measurement.
5. Due to the completion of all marine-based DCM works within May 2021, regular DCM monitoring is ceased at all monitoring stations starting from 24 June 2021 and would be resumed if there are marine-based DCM works in the coming future.

Chinese White Dolphin Monitoring Results

CWD Small Vessel Line-transect Survey

Survey Effort Data

DATE	AREA	BEAU	KM SEARCHED	SEASON	VESSEL	TYPE	P/S
7-Apr-21	NWL	2	5.840	SPRING	32166	3RS ET	P
7-Apr-21	NWL	3	45.160	SPRING	32166	3RS ET	P
7-Apr-21	NWL	4	12.900	SPRING	32166	3RS ET	P
7-Apr-21	NWL	3	8.800	SPRING	32166	3RS ET	S
7-Apr-21	NWL	4	2.600	SPRING	32166	3RS ET	S
12-Apr-21	AW	2	2.950	SPRING	32166	3RS ET	P
12-Apr-21	AW	3	1.920	SPRING	32166	3RS ET	P
12-Apr-21	WL	2	14.085	SPRING	32166	3RS ET	P
12-Apr-21	WL	3	4.941	SPRING	32166	3RS ET	P
12-Apr-21	WL	2	7.213	SPRING	32166	3RS ET	S
12-Apr-21	WL	3	2.029	SPRING	32166	3RS ET	S
12-Apr-21	WL	4	0.970	SPRING	32166	3RS ET	S
13-Apr-21	SWL	1	1.810	SPRING	32166	3RS ET	P
13-Apr-21	SWL	2	43.686	SPRING	32166	3RS ET	P
13-Apr-21	SWL	3	7.090	SPRING	32166	3RS ET	P
13-Apr-21	SWL	2	13.349	SPRING	32166	3RS ET	S
13-Apr-21	SWL	3	2.280	SPRING	32166	3RS ET	S
14-Apr-21	NEL	3	37.080	SPRING	32166	3RS ET	P
14-Apr-21	NEL	3	9.920	SPRING	32166	3RS ET	S
15-Apr-21	NEL	3	29.770	SPRING	32166	3RS ET	P
15-Apr-21	NEL	4	7.400	SPRING	32166	3RS ET	P
15-Apr-21	NEL	3	7.730	SPRING	32166	3RS ET	S
15-Apr-21	NEL	4	2.100	SPRING	32166	3RS ET	S
19-Apr-21	NWL	3	24.300	SPRING	32166	3RS ET	P
19-Apr-21	NWL	4	33.330	SPRING	32166	3RS ET	P
19-Apr-21	NWL	5	6.370	SPRING	32166	3RS ET	P
19-Apr-21	NWL	3	5.900	SPRING	32166	3RS ET	S
19-Apr-21	NWL	4	2.900	SPRING	32166	3RS ET	S
19-Apr-21	NWL	5	3.000	SPRING	32166	3RS ET	S
20-Apr-21	AW	3	4.860	SPRING	32166	3RS ET	P
20-Apr-21	WL	2	1.600	SPRING	32166	3RS ET	P
20-Apr-21	WL	3	18.466	SPRING	32166	3RS ET	P
20-Apr-21	WL	2	1.100	SPRING	32166	3RS ET	S
20-Apr-21	WL	3	9.774	SPRING	32166	3RS ET	S
21-Apr-21	SWL	3	25.980	SPRING	32166	3RS ET	P
21-Apr-21	SWL	4	13.080	SPRING	32166	3RS ET	P
21-Apr-21	SWL	5	15.050	SPRING	32166	3RS ET	P
21-Apr-21	SWL	3	8.070	SPRING	32166	3RS ET	S
21-Apr-21	SWL	4	4.740	SPRING	32166	3RS ET	S
21-Apr-21	SWL	5	3.380	SPRING	32166	3RS ET	S
6-May-21	NEL	3	30.130	SPRING	32166	3RS ET	P
6-May-21	NEL	4	7.170	SPRING	32166	3RS ET	P
6-May-21	NEL	3	10.100	SPRING	32166	3RS ET	S
11-May-21	AW	3	4.870	SPRING	32166	3RS ET	P
11-May-21	WL	3	17.180	SPRING	32166	3RS ET	P

DATE	AREA	BEAU	KM SEARCHED	SEASON	VESSEL	TYPE	P/S
11-May-21	WL	4	3.240	SPRING	32166	3RS ET	P
11-May-21	WL	3	7.890	SPRING	32166	3RS ET	S
11-May-21	WL	4	1.970	SPRING	32166	3RS ET	S
20-May-21	NWL	3	41.600	SPRING	32166	3RS ET	P
20-May-21	NWL	4	22.100	SPRING	32166	3RS ET	P
20-May-21	NWL	3	6.000	SPRING	32166	3RS ET	S
20-May-21	NWL	4	5.400	SPRING	32166	3RS ET	S
21-May-21	NEL	2	0.669	SPRING	32166	3RS ET	P
21-May-21	NEL	3	36.410	SPRING	32166	3RS ET	P
21-May-21	NEL	2	0.941	SPRING	32166	3RS ET	S
21-May-21	NEL	3	8.580	SPRING	32166	3RS ET	S
25-May-21	SWL	1	4.200	SPRING	32166	3RS ET	P
25-May-21	SWL	2	26.979	SPRING	32166	3RS ET	P
25-May-21	SWL	3	20.210	SPRING	32166	3RS ET	P
25-May-21	SWL	4	1.310	SPRING	32166	3RS ET	P
25-May-21	SWL	1	3.900	SPRING	32166	3RS ET	S
25-May-21	SWL	2	5.088	SPRING	32166	3RS ET	S
25-May-21	SWL	3	6.580	SPRING	32166	3RS ET	S
26-May-21	SWL	1	1.240	SPRING	32166	3RS ET	P
26-May-21	SWL	2	18.494	SPRING	32166	3RS ET	P
26-May-21	SWL	3	27.800	SPRING	32166	3RS ET	P
26-May-21	SWL	4	6.000	SPRING	32166	3RS ET	P
26-May-21	SWL	2	3.830	SPRING	32166	3RS ET	S
26-May-21	SWL	3	9.860	SPRING	32166	3RS ET	S
26-May-21	SWL	4	1.330	SPRING	32166	3RS ET	S
27-May-21	NWL	2	8.010	SPRING	32166	3RS ET	P
27-May-21	NWL	3	37.990	SPRING	32166	3RS ET	P
27-May-21	NWL	4	18.800	SPRING	32166	3RS ET	P
27-May-21	NWL	3	8.600	SPRING	32166	3RS ET	S
27-May-21	NWL	4	2.300	SPRING	32166	3RS ET	S
28-May-21	AW	2	4.730	SPRING	32166	3RS ET	P
28-May-21	WL	2	2.400	SPRING	32166	3RS ET	P
28-May-21	WL	3	14.857	SPRING	32166	3RS ET	P
28-May-21	WL	4	2.016	SPRING	32166	3RS ET	P
28-May-21	WL	3	8.377	SPRING	32166	3RS ET	S
28-May-21	WL	4	1.220	SPRING	32166	3RS ET	S
4-Jun-21	NEL	2	15.070	SUMMER	32166	3RS ET	P
4-Jun-21	NEL	3	17.100	SUMMER	32166	3RS ET	P
4-Jun-21	NEL	4	5.200	SUMMER	32166	3RS ET	P
4-Jun-21	NEL	2	4.230	SUMMER	32166	3RS ET	S
4-Jun-21	NEL	3	5.800	SUMMER	32166	3RS ET	S
7-Jun-21	SWL	3	15.180	SUMMER	32166	3RS ET	P
7-Jun-21	SWL	4	32.070	SUMMER	32166	3RS ET	P
7-Jun-21	SWL	5	6.500	SUMMER	32166	3RS ET	P
7-Jun-21	SWL	2	0.800	SUMMER	32166	3RS ET	S
7-Jun-21	SWL	3	0.600	SUMMER	32166	3RS ET	S
7-Jun-21	SWL	4	6.250	SUMMER	32166	3RS ET	S

DATE	AREA	BEAU	KM SEARCHED	SEASON	VESSEL	TYPE	P/S
7-Jun-21	SWL	5	2.800	SUMMER	32166	3RS ET	S
8-Jun-21	AW	2	4.950	SUMMER	32166	3RS ET	P
8-Jun-21	WL	2	8.959	SUMMER	32166	3RS ET	P
8-Jun-21	WL	3	8.488	SUMMER	32166	3RS ET	P
8-Jun-21	WL	2	4.800	SUMMER	32166	3RS ET	S
8-Jun-21	WL	3	4.462	SUMMER	32166	3RS ET	S
15-Jun-21	WL	2	0.910	SUMMER	32166	3RS ET	P
15-Jun-21	WL	3	15.750	SUMMER	32166	3RS ET	P
15-Jun-21	WL	4	3.148	SUMMER	32166	3RS ET	P
15-Jun-21	WL	2	1.320	SUMMER	32166	3RS ET	S
15-Jun-21	WL	3	7.130	SUMMER	32166	3RS ET	S
15-Jun-21	WL	4	2.542	SUMMER	32166	3RS ET	S
15-Jun-21	AW	3	4.200	SUMMER	32166	3RS ET	P
17-Jun-21	NWL	3	47.300	SUMMER	32166	3RS ET	P
17-Jun-21	NWL	4	17.300	SUMMER	32166	3RS ET	P
17-Jun-21	NWL	3	8.900	SUMMER	32166	3RS ET	S
17-Jun-21	NWL	4	2.300	SUMMER	32166	3RS ET	S
21-Jun-21	NWL	3	19.300	SUMMER	32166	3RS ET	P
21-Jun-21	NWL	4	42.410	SUMMER	32166	3RS ET	P
21-Jun-21	NWL	3	9.200	SUMMER	32166	3RS ET	S
21-Jun-21	NWL	4	5.400	SUMMER	32166	3RS ET	S
22-Jun-21	NEL	2	22.400	SUMMER	32166	3RS ET	P
22-Jun-21	NEL	3	14.510	SUMMER	32166	3RS ET	P
22-Jun-21	NEL	2	4.100	SUMMER	32166	3RS ET	S
22-Jun-21	NEL	3	6.390	SUMMER	32166	3RS ET	S
25-Jun-21	SWL	2	22.860	SUMMER	32166	3RS ET	P
25-Jun-21	SWL	3	24.890	SUMMER	32166	3RS ET	P
25-Jun-21	SWL	2	11.130	SUMMER	32166	3RS ET	S
25-Jun-21	SWL	3	4.460	SUMMER	32166	3RS ET	S

CWD Small Vessel Line-transect Survey

Sighting Data

DATE	STG #	TIME	CWD/FP	GP SZ	AREA	BEAU	PSD	EFFORT	TYPE	DEC LAT	DEC LON	SEASON	BOAT ASSOC.	P/S
12-Apr-21	1	1047	CWD	2	WL	2	271	ON	3RS ET	22.2501	113.8423	SPRING	NONE	P
12-Apr-21	2	1130	CWD	4	WL	2	335	ON	3RS ET	22.2322	113.8306	SPRING	NONE	P
12-Apr-21	3	1140	CWD	2	WL	2	52	ON	3RS ET	22.2237	113.8375	SPRING	NONE	S
12-Apr-21	4	1206	CWD	7	WL	2	438	ON	3RS ET	22.2143	113.8293	SPRING	NONE	P
13-Apr-21	1	1050	FP	3	SWL	2	222	ON	3RS ET	22.1852	113.9374	SPRING	NONE	P
13-Apr-21	2	1055	FP	4	SWL	2	150	ON	3RS ET	22.1759	113.9373	SPRING	NONE	P
13-Apr-21	3	1100	FP	3	SWL	2	14	ON	3RS ET	22.1700	113.9372	SPRING	NONE	P
13-Apr-21	4	1214	FP	1	SWL	2	419	ON	3RS ET	22.1414	113.9163	SPRING	NONE	S
13-Apr-21	5	1349	FP	3	SWL	2	413	ON	3RS ET	22.1900	113.8887	SPRING	NONE	P
13-Apr-21	6	1450	CWD	3	SWL	3	125	ON	3RS ET	22.1923	113.8691	SPRING	PURSE SEINER	P
13-Apr-21	7	1536	CWD	3	SWL	3	322	ON	3RS ET	22.1893	113.8491	SPRING	PURSE SEINER	P
20-Apr-21	1	1204	CWD	2	WL	3	155	ON	3RS ET	22.1910	113.8417	SPRING	PURSE SEINER	S
21-Apr-21	1	1152	FP	4	SWL	5	132	ON	3RS ET	22.1602	113.9181	SPRING	NONE	P
11-May-21	1	1043	CWD	2	WL	3	74	ON	3RS ET	22.2643	113.8571	SPRING	NONE	S
25-May-21	1	1105	FP	2	SWL	2	16	ON	3RS ET	22.1593	113.9280	SPRING	NONE	P
25-May-21	2	1109	FP	2	SWL	2	17	ON	3RS ET	22.1634	113.9279	SPRING	NONE	P
25-May-21	3	1252	CWD	1	SWL	2	256	ON	3RS ET	22.2042	113.8973	SPRING	NONE	P
25-May-21	4	1438	CWD	6	SWL	3	1	ON	3RS ET	22.1713	113.8681	SPRING	NONE	P
25-May-21	5	1521	CWD	1	SWL	2	129	ON	3RS ET	22.2000	113.8684	SPRING	NONE	P
25-May-21	6	1540	CWD	3	SWL	2	71	ON	3RS ET	22.1914	113.8587	SPRING	NONE	P
25-May-21	7	1610	CWD	3	SWL	2	1	ON	3RS ET	22.1813	113.8594	SPRING	NONE	P
25-May-21	8	1634	CWD	1	SWL	3	461	ON	3RS ET	22.1832	113.8495	SPRING	NONE	P
26-May-21	1	1357	CWD	2	SWL	3	199	ON	3RS ET	22.1911	113.8790	SPRING	NONE	P
26-May-21	2	1437	CWD	3	SWL	3	137	ON	3RS ET	22.1684	113.8685	SPRING	NONE	P
26-May-21	3	1504	CWD	6	SWL	2	631	ON	3RS ET	22.1958	113.8699	SPRING	NONE	P
28-May-21	1	1030	CWD	1	WL	3	651	ON	3RS ET	22.2693	113.8574	SPRING	NONE	P
28-May-21	2	1144	CWD	2	WL	4	240	ON	3RS ET	22.2142	113.8292	SPRING	NONE	P
8-Jun-21	1	1046	CWD	5	WL	2	216	ON	3RS ET	22.2501	113.8418	SUMMER	NONE	P
8-Jun-21	2	1109	CWD	4	WL	2	770	ON	3RS ET	22.2412	113.8427	SUMMER	NONE	P
8-Jun-21	3	1151	CWD	3	WL	3	38	ON	3RS ET	22.2242	113.8198	SUMMER	NONE	S
8-Jun-21	4	1246	CWD	1	WL	3	23	ON	3RS ET	22.1955	113.8333	SUMMER	NONE	P

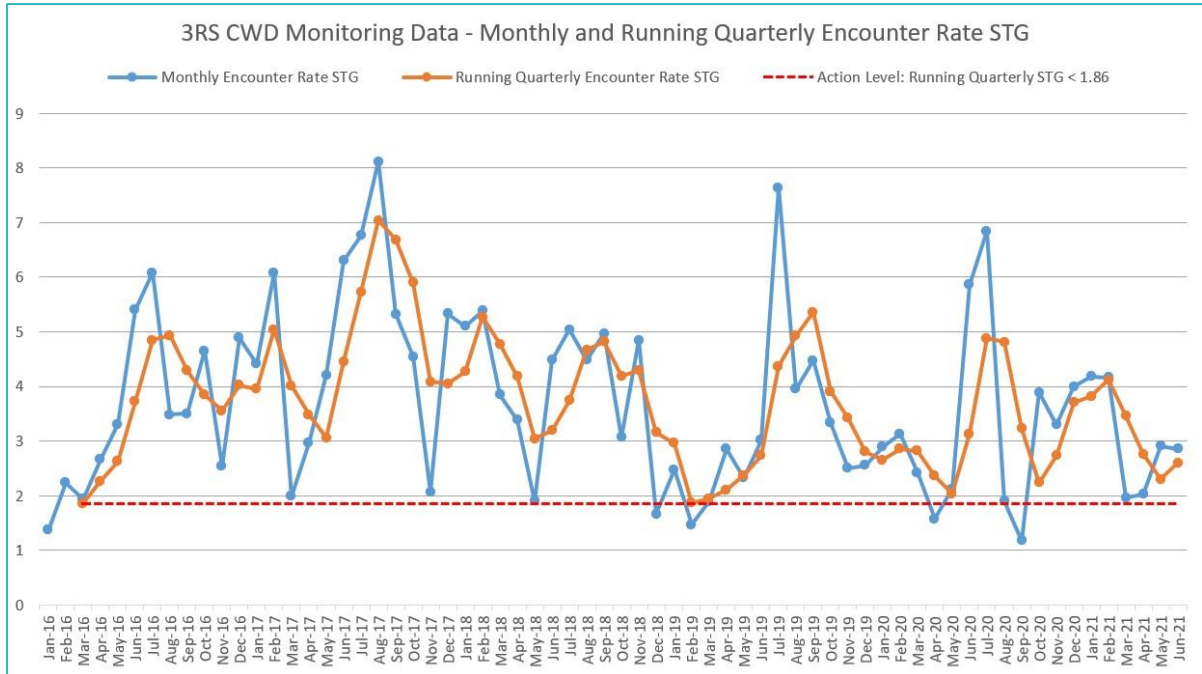
DATE	STG #	TIME	CWD/FP	GP SZ	AREA	BEAU	PSD	EFFORT	TYPE	DEC LAT	DEC LON	SEASON	BOAT ASSOC.	P/S
15-Jun-21	1	1044	CWD	4	WL	3	198	ON	3RS ET	22.2611	113.8514	SUMMER	NONE	P
25-Jun-21	1	1119	CWD	1	SWL	2	45	ON	3RS ET	22.1829	113.9277	SUMMER	NONE	P
25-Jun-21	2	1413	CWD	1	SWL	2	1006	ON	3RS ET	22.1976	113.8787	SUMMER	NONE	P
25-Jun-21	3	1429	CWD	5	SWL	3	202	ON	3RS ET	22.1832	113.8785	SUMMER	NONE	P
25-Jun-21	4	1523	CWD	2	SWL	3	816	ON	3RS ET	22.1938	113.8591	SUMMER	NONE	P

Abbreviations: STG# = Sighting Number; GP SZ = Group Size; BEAU = Beaufort Sea State; PSD = Perpendicular Distance (in metres); N/A = Not Applicable; DEC LAT = Latitude (WGS84 in Decimal), DEC LON = Longitude (WGS84 in Decimal); BOAT ASSOC. = Fishing Boat Association

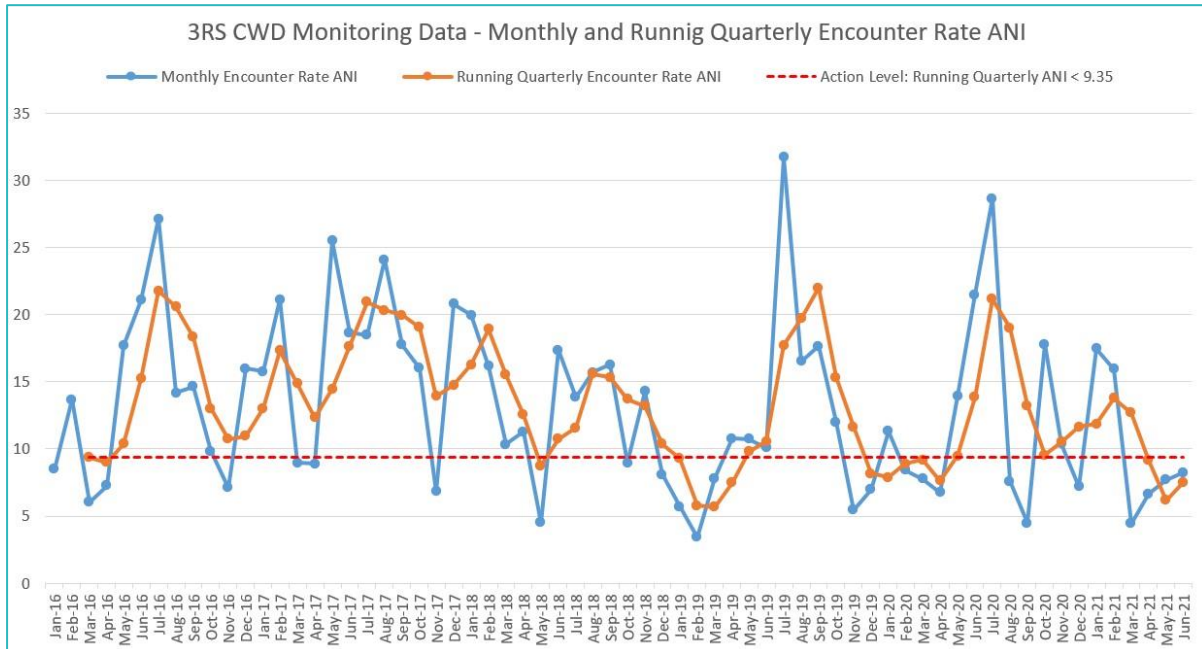
Sighting data of finless porpoise (FP) are presented for reference only. No relevant figure or text will be mentioned in the quarterly EM&A report. All FP sightings are excluded in calculation.

Graphical Presentation of Monthly and Running Quarterly Encounter Rates for the entire monitoring period

Encounter Rate STG:











Encounter Rate ANI:



CWD Small Vessel Line-transect Survey

Photo Identification

	
NLMM015	NLMM037
	
NLMM061	NLMM063
	
SLMM003	SLMM007
	
SLMM010	SLMM012



SLMM014



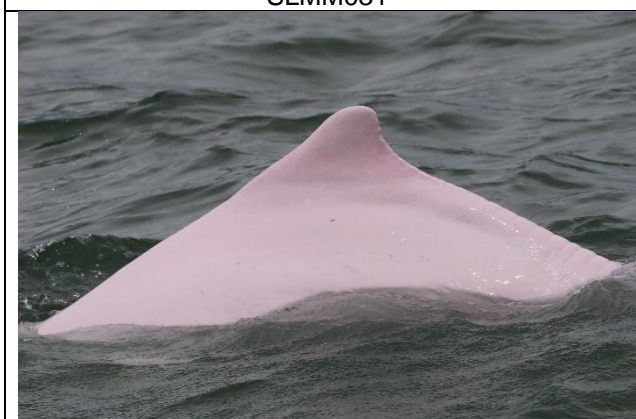
SLMM030



SLMM031



SLMM034



SLMM037



SLMM045



SLMM049



SLMM052



SLMM073 (Lower)



WLMM004



WLMM007



WLMM018



WLMM019



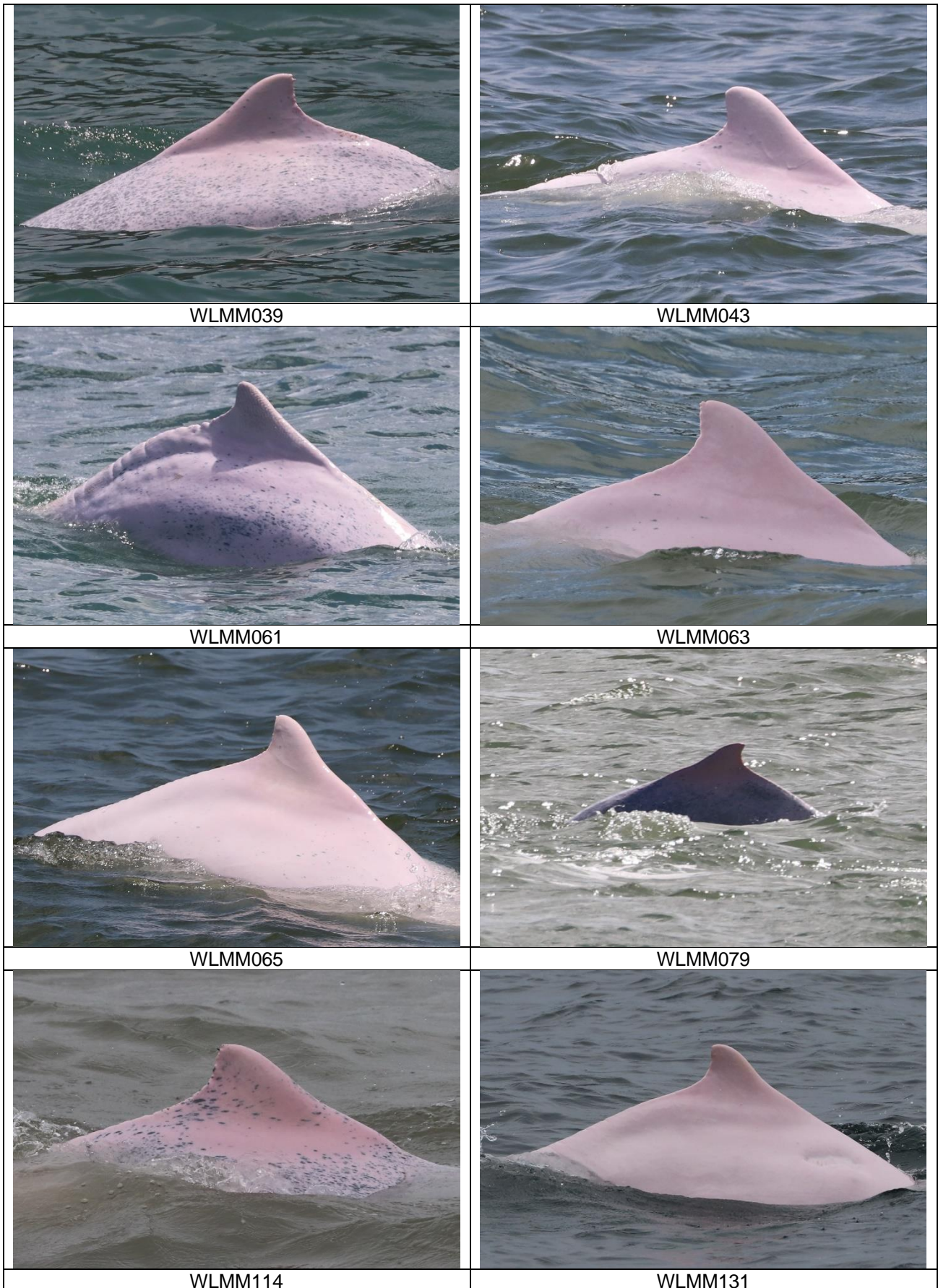
WLMM027



WLMM028



WLMM029





WLMM135



WLMM156



WLMM160



WLMM164



WLMM165

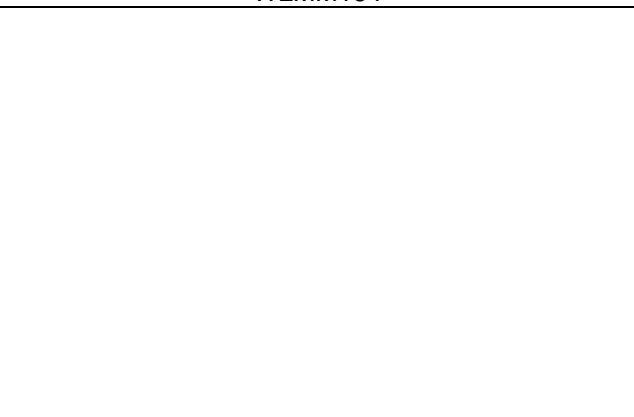
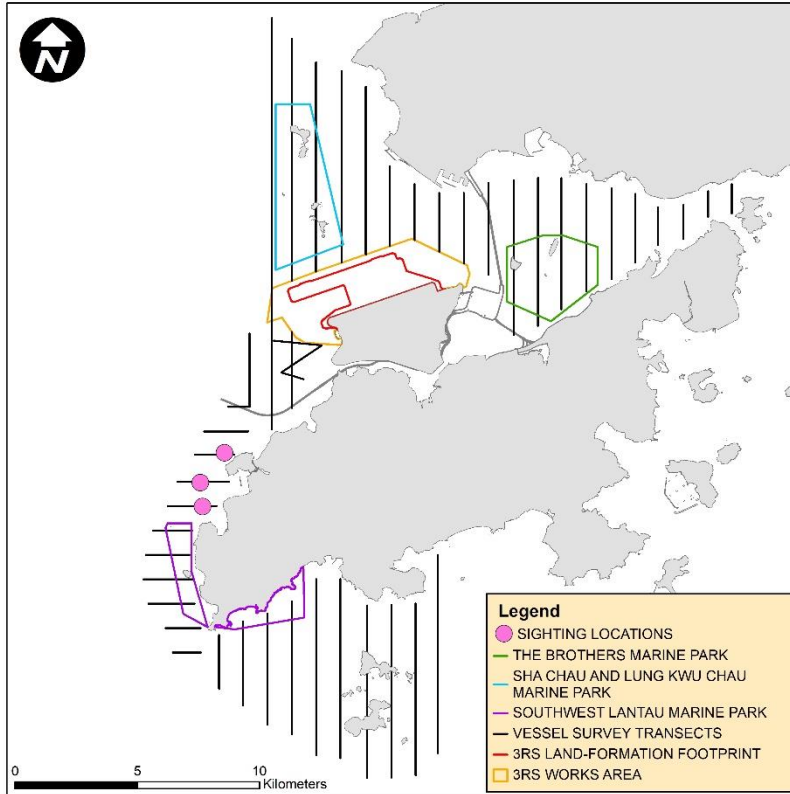
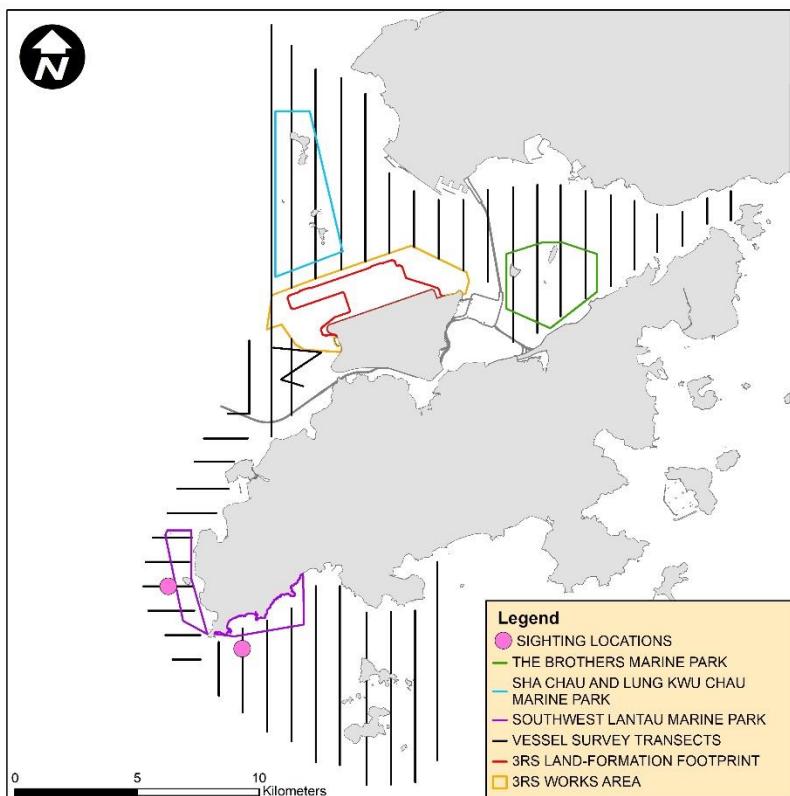


Photo Identification – Re-sighting Locations

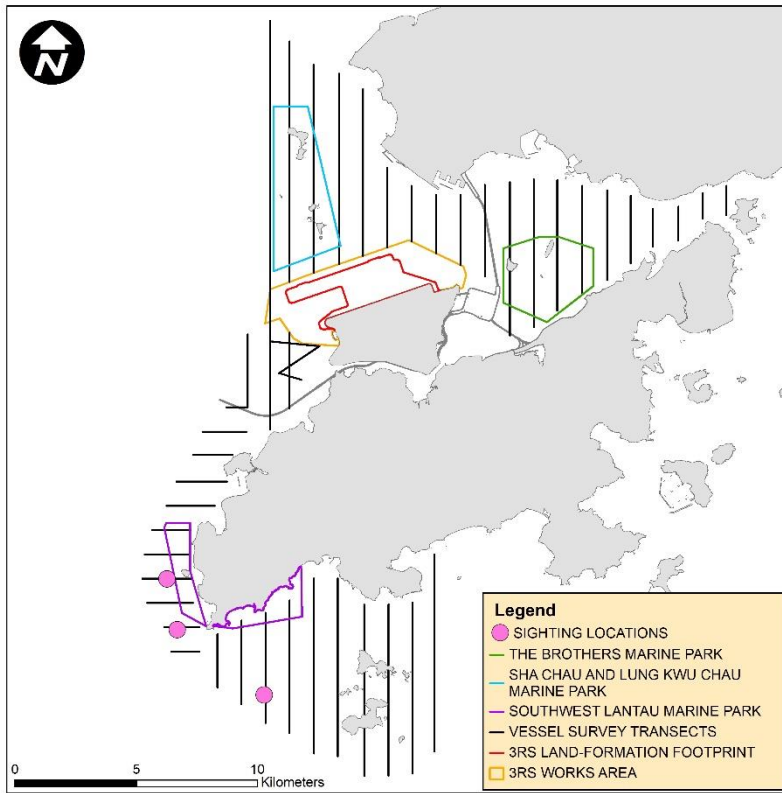
NLMM015



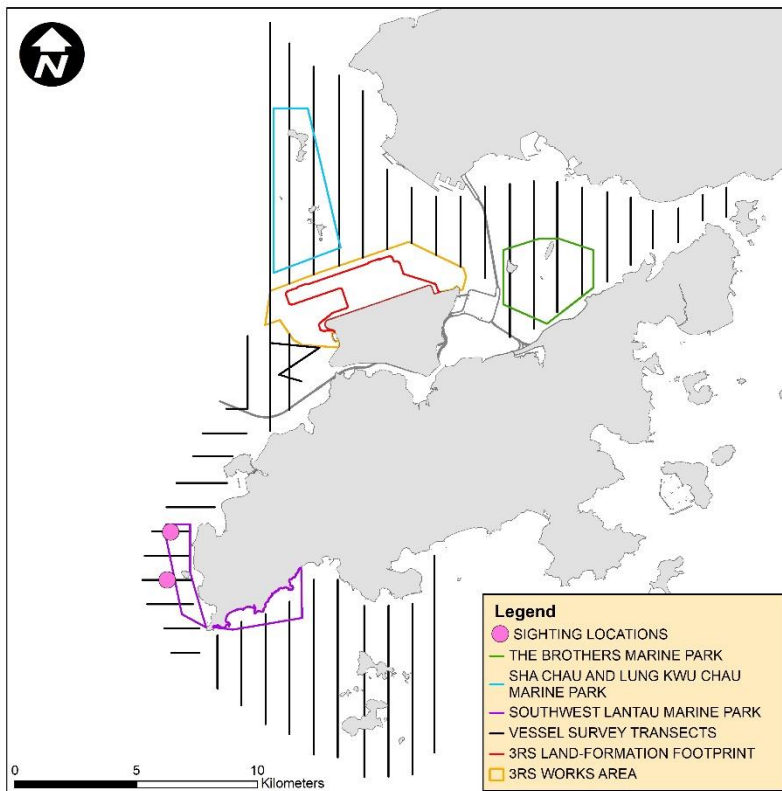
SLMM003



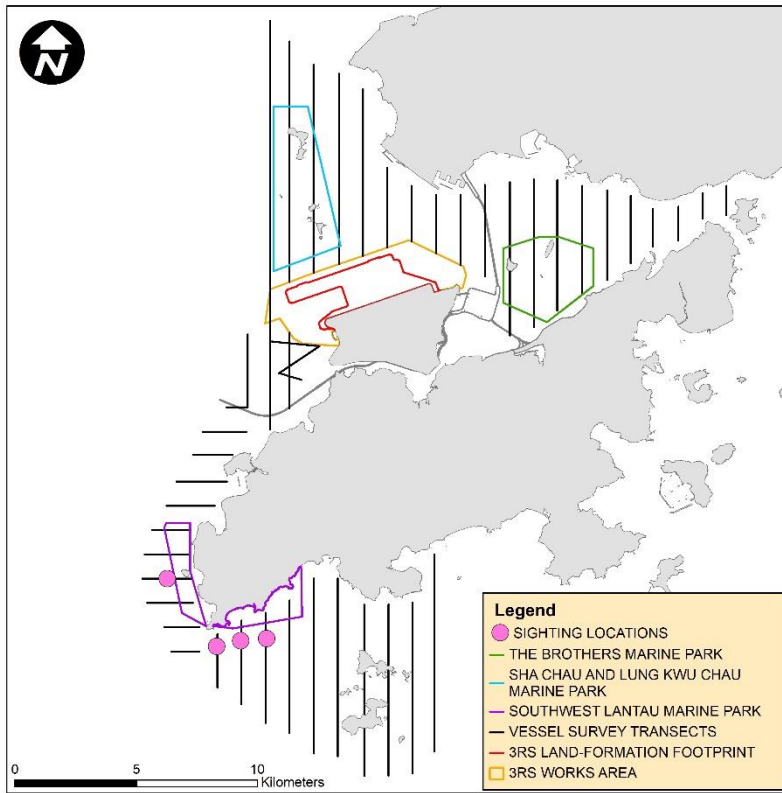
SLMM010



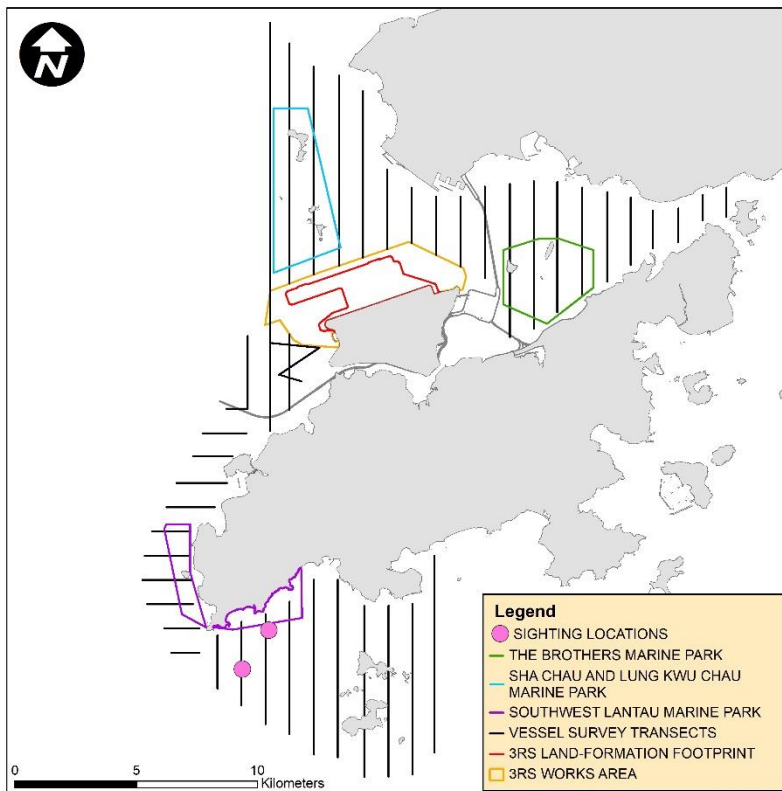
SLMM014



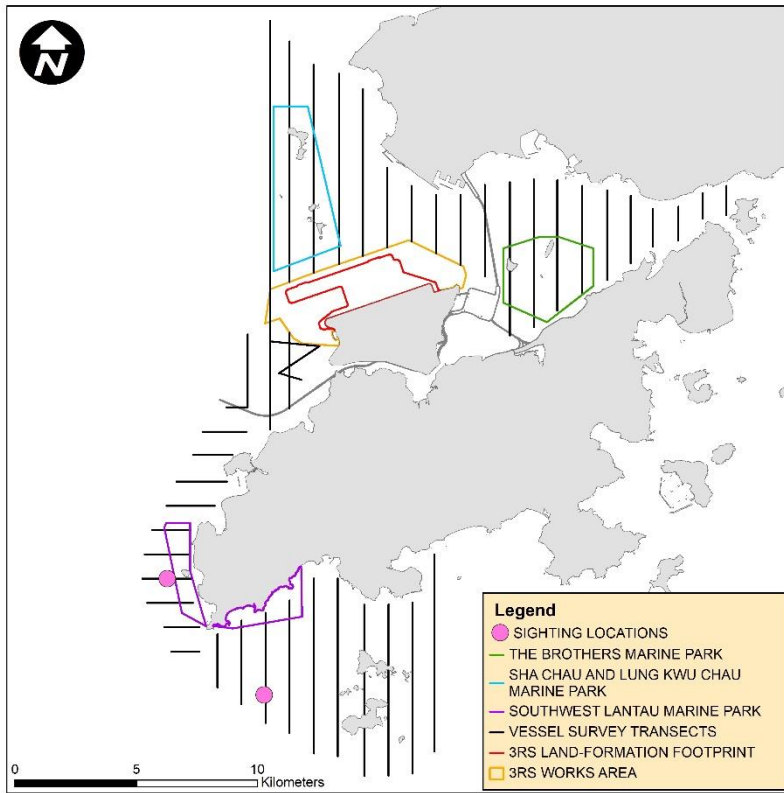
SLMM037



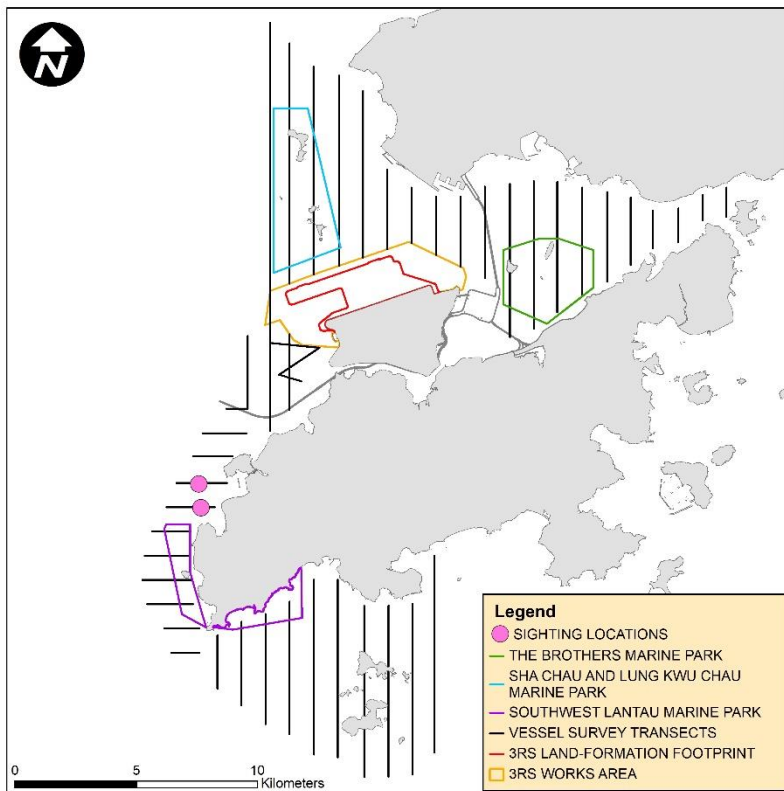
WLMM004



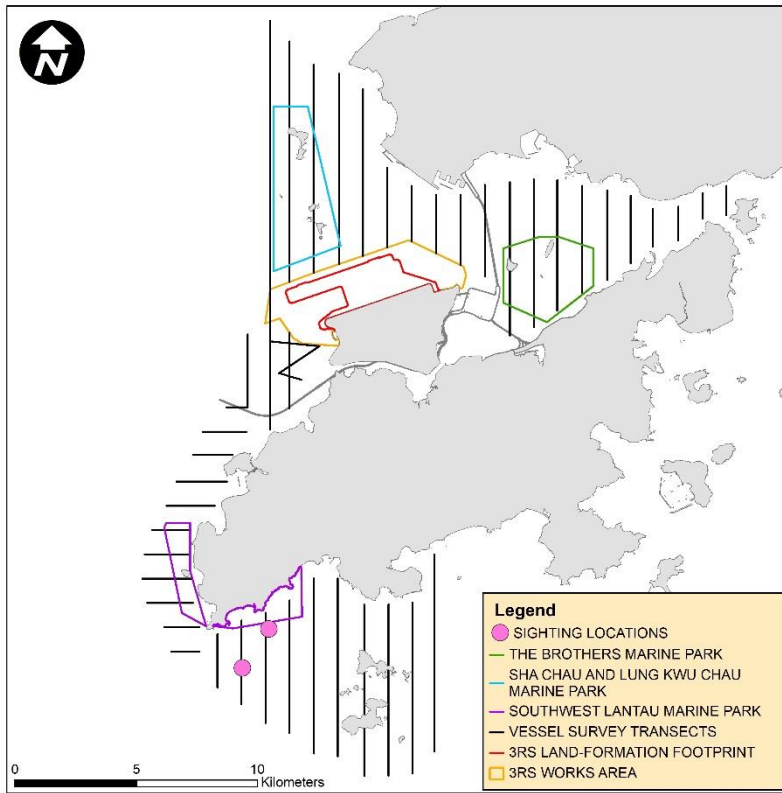
WLMM007



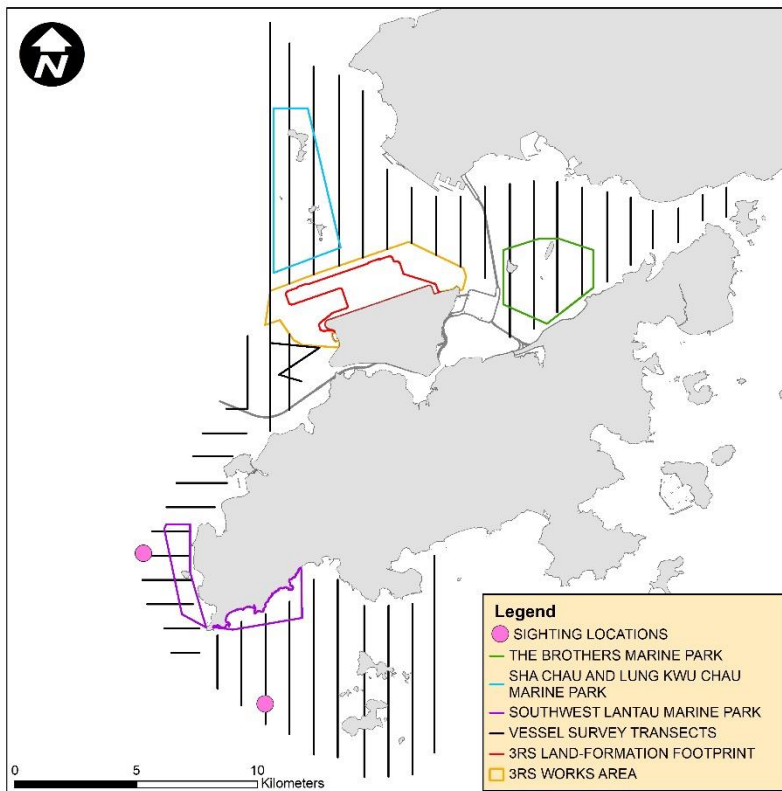
WLMM019



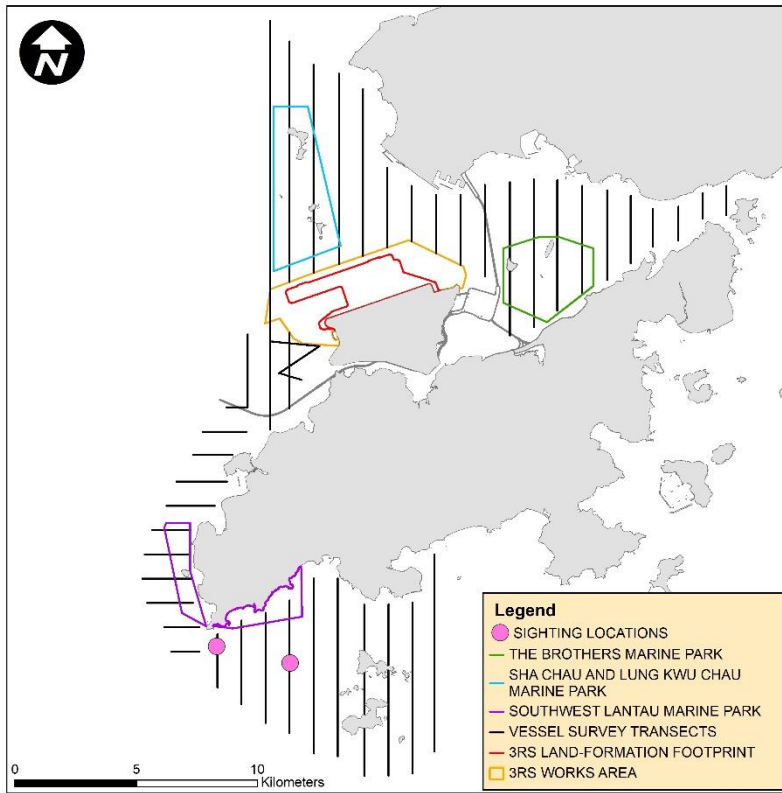
WLMM063



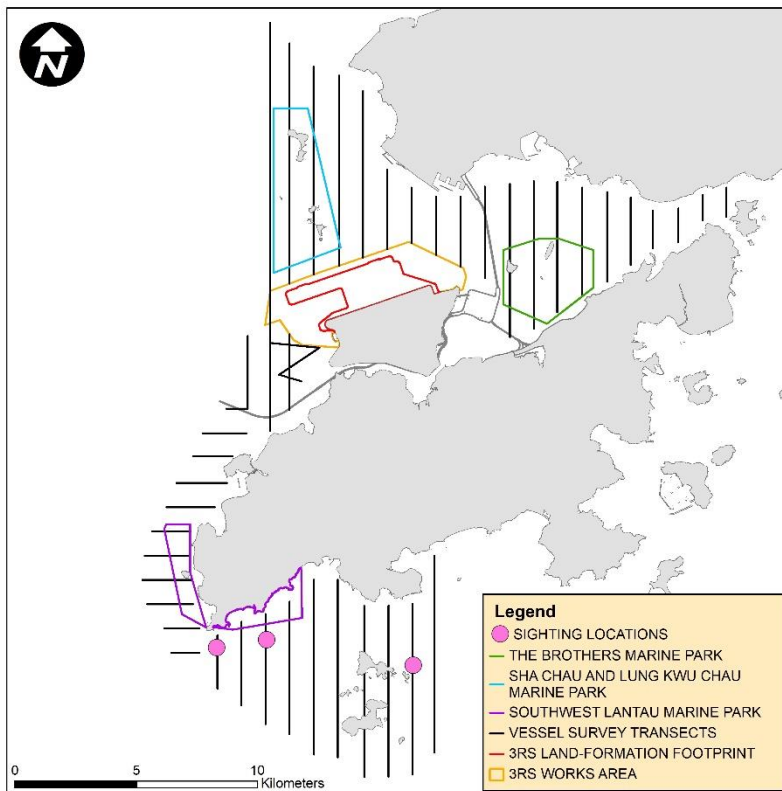
WLMM065



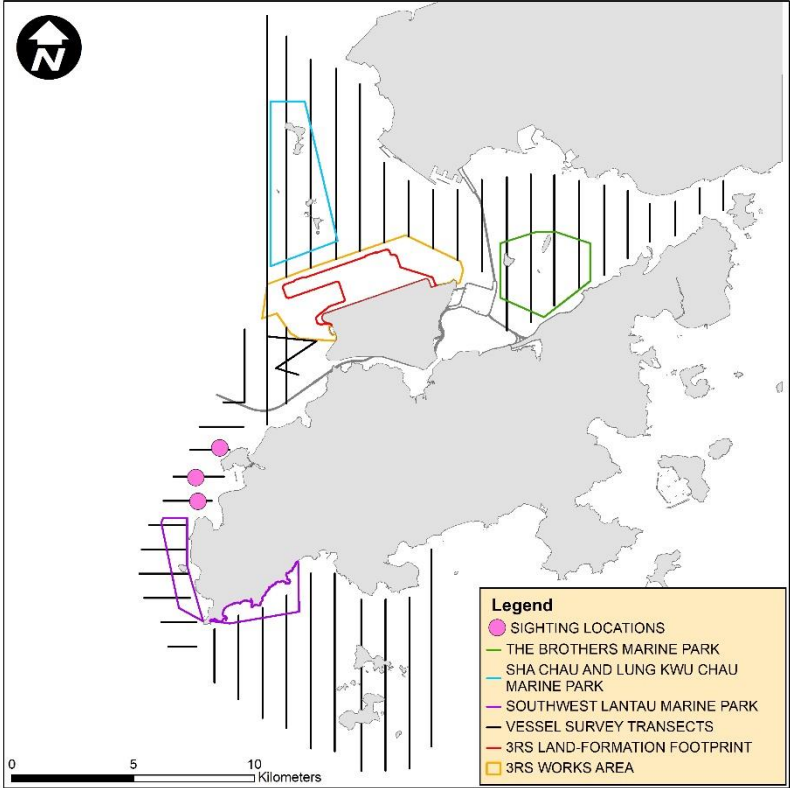
WLMM114



WLMM131



WLMM164



CWD Land-based Theodolite Tracking**CWD Groups by Survey Date**

Date	Station	Start	End	Duration	Beaufort	Visibility	No. of Focal Follow	Dolphin Group Size
15/Apr/21	Sha Chau	10:43	16:43	6:00	3-4	1-2	0	-
21/Apr/21	Lung Kwu Chau	8:52	14:52	6:00	2-3	2	2	1-4
13/May/21	Sha Chau	10:44	16:44	6:00	2	1	0	-
25/May/21	Lung Kwu Chau	9:20	15:20	6:00	2	1-4	0	-
9/Jun/21	Lung Kwu Chau	8:48	14:48	6:00	2	1-2	0	-
16/Jun/21	Sha Chau	10:56	16:56	6:00	3-5	1	0	-

Visibility: 1=Excellent, 2=Good, 3=Fair, 4=Poor

Daily Flow Monitoring Record of Sewage Pumping Station 1 (SPS1)

Daily Flow Monitoring Record of Sewage Pumping Station 1 (SPS1)

Date	Daily Flow at SPS1 (in m³/day)
1-Jun-21	7,413
2-Jun-21	14,826
3-Jun-21	13,478
4-Jun-21	13,029
5-Jun-21	14,489
6-Jun-21	22,913
7-Jun-21	9,772
8-Jun-21	10,771
9-Jun-21	13,714
10-Jun-21	13,478
11-Jun-21	10,895
12-Jun-21	16,286
13-Jun-21	8,087
14-Jun-21	9,435
15-Jun-21	20,442
16-Jun-21	14,714
17-Jun-21	12,355
18-Jun-21	12,692
19-Jun-21	12,917
20-Jun-21	12,131
21-Jun-21	5,391
22-Jun-21	17,073
23-Jun-21	11,007
24-Jun-21	14,489
25-Jun-21	14,826
26-Jun-21	12,355
27-Jun-21	14,040
28-Jun-21	20,442
29-Jun-21	15,725
30-Jun-21	14,602
Jun - 21 Daily Avg	13,460